

Historic, Archive Document

Do not assume content reflects current scientific knowledge, policies, or practices.

1261

LIBRARY
RECEIVED
★ APR 30 1929 ★
U. S. Department of Agriculture

Annual Catalogue

1873

STERLING

1929



PREMIER—THE BEST KIND

SEE PAGE 54

RALPH W. STERLING
CUTCHOGUE, LONG ISLAND, NEW YORK
TELEPHONE PECONIC 55

D. N. Shoemaker
Vegetable Seed Trials
Apr 30 1929

Cutchogue, L. I., N. Y.,

January 10th, 1929.

TO MY FRIENDS AND CUSTOMERS:-

Please accept this, my 1929 catalog, with my very best wishes that this year will prove more successful than last.

Many of our friends who depended wholly on Potatoes for their money crop were disappointed. However, it was the first real bad year in four, so we should not complain but go on as we have in the past, only it seems best not to trust to one crop alone.

Never before and probably never again will we see such high prices for Lima Beans. I filled my orders for Limas last year 100% with only one or two exceptions, and expect to this year. It is going to take all the available seed that we have to do so and we can get no more only in small lots to fill our retail orders.

Order now for 1930. An early order this year insures your Lima Bean seed for next year at a reasonable price.

Brussels Sprout Seed is also short. We have none to offer at this time. We have a fine stock of plants stored for seed crop of 1929 and hope to have plenty of our regular strain to offer next year and also some more of that fine Blue Ribbon Strain.

String Beans are very scarce and high. All other items are in the same supply as usual.

We carry only the very best strains of Garden, Flower and Field Seeds and ask a share, if not all of your orders, for 1929.

We have a fine stock of Strawberry Plants, Asparagus Roots, Bedding Plants, Hot House Plants, Hot Bed Plants, Perennials, Shrubs, Trees, Evergreens, Iris, Peonies, Narcissus, etc., etc.

You are cordially invited to look our stock over.

We do grading, landscaping, planting, and seeding and ask you for the privilege of figuring on your job.

Wishing you a Prosperous and very Successful Year, I remain

Yours sincerely,

RALPH W. STERLING.

NOTE:—In all orders received before April 1st we include trial pkts. of different kinds of seed, the number of trial pkts. depending on the size of your order.



DIRECTIONS

By carefully reading and observing the following directions, mistakes will be largely avoided.

Please use the enclosed Order Sheet and self addressed envelope if possible. If you need more let me know and I will be glad to send more to you.

Write your name, address and shipping directions plainly.

Always send the cash with your order, unless otherwise agreed upon. Money may be sent by P. O. Money Order, Bank Draft or Registered Letter. Stamps may be sent for amounts under \$1.00, but be sure to put in two-cent stamps, wrapped in waxed paper.

We pay the postage on all seeds sold by the pkt., oz., and $\frac{1}{4}$ lb. Quantities over that are priced net, to be shipped by parcel post, freight or express, at purchaser's expense, unless otherwise stated.

If you desire your seed sent by Parcel Post, add 7c for the first lb. and 1c for each additional lb. of your order, allowing 2 lbs. extra for package. For amount of postage on plants see Plant Department.

By pricing my seeds net, postage extra, you get your seeds delivered for less money than if I quoted a Postpaid price as the 7c per lb. extra would have to be counted in and added to each single lb. priced.

$\frac{1}{2}$ lbs. will be sold at lb. rates; $\frac{1}{2}$ bu. at bushel rates.

No charge is made for packing or packages, except in selling Grass Seed, Peas, Beans, etc. in bulk. Then a charge of 35c each has to be made for the 2 bushel seamless bags. These may be returned if in good condition, charges prepaid and the amount will be credited to your account.

POLE BEANS

1 Lb. will plant 100 poles.

No.		Pkt.	Lb.	² Lbs.	¹⁰ Lbs.
72	KENTUCKY WONDER or OLD HOME-STEAD. Long, tender, stringless pods..	\$.10	\$.35	\$.65	\$3.00
83	HORTICULTURAL or POLE CRAN-BERRY. Very fine for green or shell..	.10	.35	.65	3.00
79	GOLDEN CLUSTER WAX. Sweet, tasty, brittle. Yellow pods, white seed10	.40	.75	3.50

POLE-LIMA BEANS

1 Lb. will plant 50 poles.

No.		Pkt.	Lb.	2 Lbs.
95	BURPEE'S NEW SUNNYBROOK POLE LIMA. Extremely early and very productive. Fine quality	\$.15	\$.40	\$.75
96	EARLY LEVIATHAN. The earliest large podded Lima. Large beans of fine quality10	.35	.65
98	GIANT PODDED POLE LIMA. Very large pods and beans of fine quality. Matures late..	.10	.40	.75

BUSH LIMA BEANS1 Lb. will plant 100 ft. in hills or 50 ft. in drill
1¼ bu. to the acre.

No.		Pkt.	Lb.	2 Lbs.	10 Lbs.	Bu.
65	FORDHOOKS. From Burpee. Best for table and market	\$.15	\$.50	\$.90	\$4.00	\$22.50
63	BURPEE IMPROVED BUSH LIMA. The best flat podded Lima; very large, prolific and delicious..	.10	.40	.75	3.75	20.00
	DREER'S BUSH LIMA. The old fashioned Potato Lima15	.40	.75	3.75	
68	WOOD'S PROLIFIC or HENDERSON'S. Small, early and very prolific15	.35	.65	3.00	

If anyone is interested in Spraying their crop of Lima Beans send to New York Agricultural Experiment Station, Geneva, N. Y. and ask for Bulletin No. 558, "Spraying Experiments with Bush Lima Beans," by Dr. E. E. Clayton.

BEETS—TABLE

1 oz. will sow 50 ft. of drill.

No.		Pkt.	Oz.	¼ Lb.	Lb.
111	CROSBY EGYPTIAN. An early beet of fine quality. One of the best	\$.05	\$.15	\$.45	\$1.20
128	BURPEE'S IMPROVED BLOOD. Dark Red, quick growing and very sweet05	.15	.40	.95

BEETS—TABLE—*Continued*

No.		Pkt.	Oz.	¼ Lb.	Lb.
119	SUNNYBROOK. Dark crimson flesh. New, quick growing. Fine quality10	.20	.50	1.50
	DREER'S EXCELSIOR BLOOD BEET. Rich dark color, extra early and fine quality, even when fully matured10	.20	.50	
125	EARLY WONDER. Matures very early and uniform, has a good dark color and of fine quality. Small tops. The best early05	.15	.45	1.10
115	DETROIT DARK REL. Quality. Good for canning or table. Main crop05	.15	.45	1.10
121	BURPEE'S BLACK RED BALL. For a small canning beet this is unsurpassed. Very dark, good quality, smooth10	.20	.50	1.50
	SWISS CHARD. See page 20.				

BEETS—STOCK

No.		Oz.	¼ Lb.	Lb.
145	GIANT HALF SUGAR. Rose skinned. One of the best for cattle and fowl. Grows large, smooth, and full of sugar	\$.10	\$.20	\$.50
147	GOLDEN TANKARD. Yellow fleshed, large, solid10	.20	.50
151	MAMMOTH PRIZE LONG RED. Largest, heaviest cropping mangel of all10	.20	.50
	5 lbs. or more of any of the above stock beets at 45c per lb.; postage extra.			
	Seed by the Pkt., Oz. and ¼ lb. postpaid. Lb. prices are priced net, postage extra. See page 3 for postal rates.			

BRUSSELS SPROUT SEED

2 to 3 ozs. will produce enough plants for 1 acre.

STERLING STRAIN. This is a very choice strain of seed selected and grown by the same careful grower that I have had grow this strain for me a number of years. The plants grow medium tall and this insures a very large crop of choice Sprouts. Crop short. Sold out.

BROCCOLI

Italian Green sprouting. The best kind to plant for market. Pkt., 20c; oz., \$1.10.

CAULIFLOWER SEED

2 to 3 oz. will produce enough plants for 1 acre.

STERLING LARGE EARLY ERFURT. Large white heads, heading up quite freely.

In the Cauliflower test run on my farm in 1926 there were over 20 kinds and this kind showed up as one of the very best suited for this section.

CAULIFLOWER SEED—*Continued*

See testimonials about this strain of seed. We have new crop seed and seed of 1927 crop same as we sold last year. It tests good and strong and we know it is right. State which you want.

Per Pkt., 20c; 1 Oz., \$1.50; ¼ Lb., \$5.75; Lb., \$22.50.

All Cauliflower seed will be treated with the Hot-water treatment.

CATSKILL SNOWBALL. If any one wants the Snowball type this is a very good strain and has been recommended highly. Seed treated with hot water.

Per Pkt., 25c.; Oz., \$1.75; ¼ Lb., \$6.50.

Will have a large bed of Cauliflower, Brussels Sprouts and Cabbage Plants. Will be pleased to book your orders at any time. Prices always reasonable and ready to adjust them if changes occur.

Spray your Cauliflower and Brussels Sprout Plants with Nicotine Sulphate or dust with Nicotine Dust. They control Thrip and Lice.

CABBAGE SEED—LONG ISLAND GROWN

1 pkt. will produce 500 plants.

1 oz. will produce from 2 to 3 thousand plants.

No.		Pkt.	Oz.	¼ lb.
175	GOLDEN ACRE. New. Earliest of all. Round solid heads of fine quality. Danish grown....	\$.15	\$.50	\$1.60
	EXTRA EARLY JERSEY WAKEFIELD. Earliest, pointed. Allen's special strain.....	.10	.25	.75
	LARGE EARLY CHARLESTON WAKEFIELD. Large, pointed. Allen's special strain	.10	.25	.75
178	COPENHAGEN MARKET. From Burpee. Extra early, round head10	.30	1.00
	STERLING ALL SEASON. Large, 2nd early, the surest heading kind for Spring and Fall. Flat heads10	.30	1.00
	EARLY SUMMER. Large flat heads.....	.10	.25	.75
	PREMIUM FLAT DUTCH. Large, late.....	.10	.25	.75
	LARGE LATE DRUMHEAD. Standard late	.10	.25	.75
205	DANISH ROUND HEAD. Short stem. Very solid heads of fine quality. Ball head type.....	.10	.30	1.00
	SAVOY. Long Island Special. Large heads, crinkled, best quality10	.50	1.50
	RED. Allen's Special. Sure heading, large....	.10	.50	1.50
212	PE TSAI. Long head, large Chinese.....	.10	.25	1.00

My Cabbage Seed is treated with the Semi-San treatment to control Black Leg and Black Stem.

CORN—SWEET

One lb. will plant from 100 to 200 hills.

No.		Pkt.	Lb.	² Lbs.	¹⁰ Lbs.
301	GOLDEN BANTAM. From Burpee. Sweetest corn there is. Medium early, small ears. Can be planted quite early. Some plant every week through the season. Best for market	\$.10	\$.35	\$.60	\$2.75
	GOLDEN BANTAM. From Conn. and Long Island. Good pure seed of high germination. True to type10	.25	.45	2.20
	EARLY MAYFLOWER. Extra early. Large ears. Best for early market. A money maker. From Conn.10	.30	.50	2.25
	GOLDEN SUNSHINE. A new extra early Golden Bantam. The earliest yellow corn, very sweet and fair sized ear. About the same as the new Burpee15	.35	.65	3.00
	ALPHA. Earliest White Sweet Corn. Nice sized ear. Very fine10	.30	.55	
	EARLY MARKET or 60 Day. Make good. Earliest of all15	.40	.75	
	WHIPPLE'S EARLY YELLOW. Large ears, fairly early15	.35	.65	
322	BURPEE BRANCHING. Burpee's newest corn. White, ears 7 inches long and averages 3 ears per plant30	.90	1.70	
305	FORDHOOK. Burpee's best extra early. Large ears. Very sweet and prolific10	.30	.55	2.50
310	HOWLING MOB. Burpee's best second early. Large ears, very fine quality and prolific10	.30	.55	2.50
306	BURPEE. A new extra early Yellow Sweet corn. Larger and earlier than G. B....	.20	.50		
327	DREER'S INDEPENDENCE. A new extra early white Sweet corn of fine quality. Dwarf habit. 2 to 3 ears to stalk15	.50		
316	BURPEE'S DELICIOUS. Very sweet, 2nd early. The sweetest white corn15	.35	.65	
325	BURPEE'S SUNNYBROOK. Yellow, early, sweet15	.35	.65	
329	GOLDEN GIANT. Cross between Golden Bantam and Howling Mob. Large ears..	.10	.35	.65	2.70
	METROPOLITAN. Large ears. Sweet, 2nd early, finest quality10	.30	.55	2.50
	SQUANTAM. One of the best. Large eared, second early10	.30	.55	2.20
	LONG ISLAND BEAUTY. Very large ears and a great favorite for market....	.10	.30	.50	2.20

CORN—SWEET—*Continued*

No.		Pkt.	Lb.	² Lbs.	¹⁰ Lbs.
	BANTAM EVERGREEN. A large eared yellow corn of fine quality. Just what your city customers will go wild over....	.10	.30	.55	2.50
333	WHITE EVERGREEN. A few days earlier than Stowell's, pure white kernels, which makes it excellent for canning ..	.10	.30	.55	2.50
335	STOWELL'S EVERGREEN. Standard Very fine for late. Large ears10	.30	.55	2.50
337	COUNTRY GENTLEMAN, or SHOE PEG. Considered by many the sweetest of all White Sweet Corn. Zigzag kernels10	.30	.55	2.50

Look the above list over carefully. Every kind listed is fine for its kind and season.

CORN—FIELD, POP AND FODDER

1 peck of Field Corn will plant 1 acre in hills 4 ft. x 4 ft.

1 bushel of Fodder Corn will plant 1 acre in drills.

LUCE'S FAVORITE FIELD CORN. A yellow hybrid, makes a leafy stalk and a very fine large ear.

Selected ears, each, 5c; per 100, \$4.50.

Shelled, per lb., 10c; 10 lbs., 80c.; per bushel of 56 lbs., \$3.50

L. I. RED COB. A fine corn for this section. 10 lbs., 80c; per bu., \$3.50.

353 QUEEN'S GOLDEN POPCORN. Largest and best. Buy a lb. for popping. Per pkt. 10c; per lb. 30c.

355 WHITE RICE POPCORN. Bears 3 to 4 ears to stalk. Sure popper. Pkt., 10c; Lb., 30c.

6073 SORGHUM or EARLY ORANGE SUGAR CANE. Succulent and sweet. Per lb., 20c; per 10 lbs., \$1.50.

6045 SWEET CORN FOR FODDER (Stowell's Evergreen). Per 10 lbs. at 20c; 100 lbs. at 18c.

CARROT SEED

1 oz. will sow 200 ft. of drill.

2 lbs. to the acre.

No.		Pkt.	Oz.	¼ Lb.	Lb.
218	AMSTERDAM FORCING. One of the best for table use. Early, small	\$.05	\$.20	\$.60	\$2.00
223	BURPEE'S OXHEART. Quality05	.15	.40	1.00
221	CHANTENAY or MODEL. The leading kind for early market, tender05	.15	.40	1.00
224	GOLDINHART. Burpee's new Carrot. An improved Chantenay10	.25	.75	2.10

CARROT SEED—Continued

No.		Pkt.	Oz.	¼ Lb.	Lb.
226	HALF LONG NANTES. Cylindrical, about 6 inches long, quality, coreless ..	.05	.15	.45	1.20
225	DANVERS HALF LONG. The standard kind for field and garden. Burpee's strain, very select. Heavy yielding05	.15	.40	1.00

CELERY SEED

No.		Pkt.	Oz.	¼ lb.
266	WHITE PLUME. Earliest, self blanching.....	\$.10	\$.25	\$.90
272	FORDHOOK. Burpee's Best. Dwarf, Crisp, nutty flavor. Stalks thick, solid and easily blanched for Fall or Winter storage20	1.00	3.00
260	GOLDEN SELF BLANCHING. Best American grown seed. Dwarf. Delicious flavor15	.60	2.00
	GOLDEN PLUME. Livingston's Strain. New Fine for Fall or Winter. One of the best. ¼ oz., 75c25	1.75	
282	GIANT PASCAL. Tall, crisp and nutty. Late	.10	.30	.90
275	WINTER QUEEN. Dwarf, heavy stalk.....	.10	.30	.90

Will have an extra large bed of plants this year. Place your orders early. All kinds listed. See pages 61, 62.

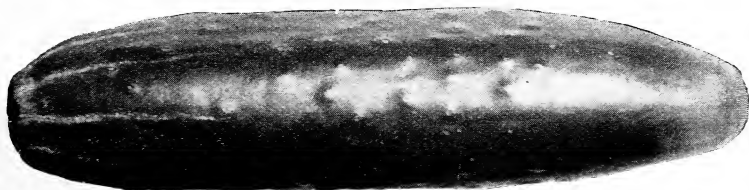
Seed by the Pkt., Oz. and ¼ lb. are postpaid.

Seeds by the lb. are net. Postage extra. See page 3 as to postal rates.

CUCUMBER SEED

1 oz. will plant 100 hills. 1 to 5 lbs. to the acre.

No.		Pkt.	Oz.	¼ Lb.	Lb.
371	EARLY GREEN CLUSTER. Small, prolific, a good pickling sort	\$.05	\$.15	\$.45	\$1.10
375	EVERBEARING. Very early and prolific, one of the best for small pickles05	.15	.45	1.20
377	EXTRA EARLY GREEN PROLIFIC, or BOSTON PICKLING. A medium sized good quality pickle cucumber05	.15	.45	1.00



Davis Perfect

CUCUMBERS—*Continued*

No.		Pkt.	Oz.	¼ Lb.	Lb.
395	BURPEE'S FORDHOOK PICKLING. Thin skinned and very prolific05	.15	.50	1.25
380	CHICAGO PICKLING. A fine pickling sort of good color and preferred by some to the Boston Pickling05	.15	.45	1.00
381	ARLINGTON WHITE SPINE. One of the best for market. Very productive....	.05	.15	.45	1.10
379	BURPEE'S EXTRA EARLY WHITE SPINE. The very best in quality. Good for very early or very late plantings.....	.05	.15	.50	1.35
383	BURPEE'S FORDHOOK WHITE SPINE. This is one of the best for home garden, market, or if picked young, for pickles..	.05	.15	.50	1.25
400	DAVIS PERFECT. The most popular kind for market. Large, green, free from disease and very productive05	.15	.50	1.40
399	LONDON or IMPROVED LONG GREEN. Good for home garden, market, or if picked small makes fine pickles05	.15	.50	1.35
401	EARLY FORTUNE. A select strain of DAVIS PERFECT. Good quality and fine for market. Early05	.15	.50	1.30
393	FORDHOOK FAMOUS. The best fla- vored and largest of the White Spine type. Very prolific05	.15	.50	1.30
	WOODRUFF'S HYBRID. A wonderful, fine shipping cucumber of perfect shape and color. Very productive and a great favorite05	.15	.50	1.30
	KIRBY'S STAY GREEN. Claimed to be perfect in shape, color and shipping qual- ities. Early and productive05	.15	.50	1.25
	CLARK SPECIAL. A fine large Cucum- ber quite free from disease. Good shape and productive. One of the best.....	.05	.15	.50	1.25

Have a large supply of Cucumber Seed always on hand. Special prices on 5 lb. lots.

EGG PLANT SEED

No.		Pkt.	Oz.
420	BURPEE'S BLACK BEAUTY. Early and best....	\$.15	\$.45
422	NEW YORK SPINELESS IMPROVED. Late, large Will have a fine lot of Egg Plants in season, well hardened.	.15	.45

ENDIVE

No.		Pkt.	Oz.	
430	GREEN CURLED or GIANT FRINGED OYSTER. Best in Summer and Fall	\$.10	\$.20	
297	FRENCH ENDIVE or WHITLOOF CHICORY. Sow in June for winter salads. Store in your cellar and sprout them as wanted10	.20	

KALE

No.		Pkt.	Oz.	¼ Lb.	Lb.
446	DWARF GREEN CURLED. One of the best for greens, ducks or chickens.....	\$.05	\$.15	\$.40	\$.95

KOHL RABI

No.		Pkt.	Oz.	¼ lb.
456	EARLY WHITE VIENNA. Best quality, extra early, short topped. The young roots resemble Cauliflower in flavor	\$.10	\$.20	\$.60

LEEK

No.		Pkt.	Oz.	¼ lb.
461	BROAD LONDON or LARGE AMERICAN FLAG. Should be blanched white before using	\$.10	\$.25	\$.80

LETTUCE

1 oz. will plant 250 ft. of drill.

No.		Pkt.	Oz.	¼ Lb.	Lb.
475	BIG BOSTON. One of the best for early sowing or late Summer. Heads best in cool weather. Burpee's select stock.....	\$.05	\$.15	\$.50	\$ 1.40
524	NEW YORK IMPROVED. Some con- sider this the very best lettuce there is. Leaves curled nicely; heart crisp and sweet; large size; quality. Leaves green	.10	.20	.75	2.20
493	EARLY CURLED SIMPSON for cutting. Black seeded. Best loose leaved05	.15	.50	1.40
497	EARLY PRIZE HEAD. Outside leaves brown, well blanched heart. Does not head up05	.15	.50	1.40
440	DREER'S ALL HEART. The best kind that Dreer has; solid, crisp heads10	.40		
474	MAY KING. Quite early, heads nicely in early Spring, quality fine and crisp.....	.05	.15	.50	1.40
476	BURPEE'S WAYAHEAD. One of the earliest heading varieties, fine flavor and a sure heading kind05	.15	.50	1.40
469	BLACK SEEDED TENNIS BALL or SALAMANDA. A great favorite. Quali- ty is there; a sure header; early05	.15	.50	1.40

LETTUCE—Continued

No.		Pkt.	Oz.	¼ Lb.	Lb.
473	WHEELER'S TOM THUMB. Heart and outside leaves tender and juicy05	.15	.50	1.40
504	DEACON. One of the best Butterhead sorts. Fine for Summer and Fall05	.15	.50	1.40
528	BURPEE'S BRITTLE ICE. Very crisp and sweet; stands hot weather well10	.20	.60	1.90
530	BURPEE'S ICEBERG. Very crisp and juicy. Waxy, crisp, white solid heart. Best for hot weather10	.20	.60	1.70
522	HANSON. One of the largest and surest heading sorts. Crisp, mild and tender..	.05	.15	.50	1.40
537	COS. or ROMAINE. Dwarf White Heart. Burpee's best Cos. Crisp, juicy. Does not have to be tied up as leaves curl over	.05	.15	.50	1.40
Mixed Lettuce. All kinds mixed together, making a fine succession. Per large pkt., 10c.					

Greens and salads are rightly called "Nature's Tonics" because they contain mineral salts. The importance of these mineral salts in the diet cannot be overestimated. Greens and salads, such as Lettuce, Mustard, Spinach, Cabbage, Swiss Chard and Kale, are easily grown, have few insect pests and should be planted in variety and succession in every garden.

MUSK MELON

1 oz. will plant about 50 hills.

BURPEE'S Musk Melons are the standard for quality.

No.		Pkt.	Oz.	¼ Lb.	Lb.
544*	BURPEE'S NETTED GEM or ROCKY FORD. One of the best table melons..	\$.05	\$.15	\$.45	\$ 1.20
554*	EXTRA EARLY HACKENSACK. Early and sweet. Heavily ribbed and netted..	.05	.15	.45	1.15
564	BENDER'S SURPRISE. Quality the best. Grey skin. Orange flesh. Luscious. Large	.05	.15	.50	1.40
557*	HONEY BALL. New. A cross between a Cantaloupe and a Honey Dew. Really an early maturing Honey Dew Melon retaining the wonderful Honey Dew flavor	.10	.20	.60	2.00
562*	MONTREAL GREEN NUTMEG. Very large and of good quality05	.15	.45	1.10
571	HEARTS OF GOLD, or HOODOO. Blight resisting, Midseason. Medium sized melon of delicious flavor05	.15	.50	1.25
574	BURPEE'S FORDHOOK. Flesh very thick and rich, orange yellow. Luscious	.05	.15	.50	1.30
575	BURPEE'S EMERALD GEM. The most delicious of all small melons. Salmon flesh, luscious. Green skin, early05	.15	.45	1.10

MUSK MELON—Continued

No.		Pkt.	Oz.	¼ Lb.	Lb.
578	BURPEE'S SPICY. Bright yellow skin with a deep rich salmon flesh of extreme lusciousness. Large, thick flesh10	.20	.70	1.90
585	GOLDEN EAGLE. Large and very fine quality. Good for heavy soil10	.20	.70	1.90
	Mixed Musk Melon. Several kinds mixed together, making a fine succession. Per pkt., 10c.				
	* Those marked with an asterisk (*) are Green Fleshed.				

WATER MELON

1 oz. will plant 25 hills.

No.		Pkt.	Oz.	¼ Lb.	Lb.
588	BURPEE'S FORDHOOK EARLY. A large extra early melon of good quality \$.05	\$.15	\$.45	\$1.00
590	COLES EARLY. A small early melon, sure to ripen. Of good quality05	.15	.40	.80
540	FLORIDA FAVORITE. One of the finest flavored melons there is. White seeded, flesh deep pink. Seed from Dreer.....	.05	.15	.45	1.00
608	KLECKLY SWEETS. Burpee's. One of the best for home garden. Good in quality, size and yield, long melons05	.15	.45	1.00
611	HALBERT HONEY. Burpee's selection as the best for home gardens. Sweet...	.05	.15	.45	1.00
634	ICE CREAM. True White Seeded. The most popular kind that we carry. Does well for everybody. Sweet05	.15	.40	.90
613	TOM WATSON. Very large and good quality. One of the best for market.....	.05	.15	.40	.90
601	SUGAR STICK. Large, light skinned, bright red flesh. Fine in quality05	.15	.40	.90
	Mixed Water Melon. Several kinds mixed together, giving a fine assortment. Per large pkt., 10c.				
645	COLORADO PRESERVING CITRON..	.05	.15	.45	1.10

MUSTARD

No.		Pkt.	Oz.
647	FORDHOOK FANCY. Very large. One of the best and largest of greens. Good quality	\$.05	\$.15

OKRA OR GUMBO

No.		Pkt.	Oz.	¼ Lb.
667	PERFECTED PERKINS. Long pod. Very prolific. Used for soups or as a separate dish \$.05	\$.15	\$.40
666	KLECKLY FAVORITE. Very early05	.15	.40

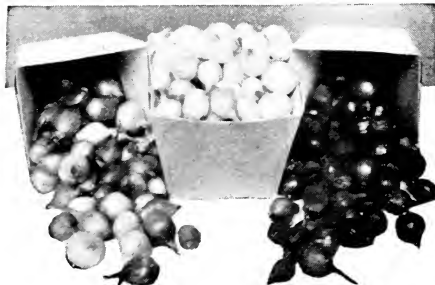
ONION SEED

1 oz. will plant 200 feet

No.		Pkt.	Oz.	¼ Lb.	Lb.
680	SOUTHPORT YELLOW GLOBE. Burpee's Special Stock	\$.10	\$.20	\$.65	\$1.95
696	SOUTHPORT WHITE GLOBE. Burpee's Special Stock10	.30	1.00	3.20
690	SOUTHPORT RED GLOBE. Burpee's Special Stock10	.25	.80	2.40
672	JAPANESE YELLOW or EBENEZER. Very mild, long keeper; flat10	.30	.85	2.40
681	PRIZETAKER. Large yellow. Very heavy yielding, mild flavor. Burpee's selected strain10	.20	.70	2.00
671	YELLOW GLOBE DANVERS. Standard for Winter use. A great keeper. Mild10	.20	.70	1.95
687	RED WETHERSFIELD. The most popular of all red onions. Flat, large and a heavy yielder10	.20	.70	1.95
697	WHITE PORTUGAL or WHITE SILVERSKIN. Flat, large, if sown thin. Sow thick for pickles. Mild.....	.10	.30	.90	2.80
711	BURPEE'S GIGANTIC GIBRALTAR. Largest yellow, globe shape. Mild and very sweet10	.30	.90	2.85
707	BURPEE'S MAMMOTH SILVER KING. The largest white onion. Sweet and tender. Matures early10	.30	.90	2.80

Eat Onions for Health!

Scientists have found in onions some very valuable ingredients. They claim that onions promote digestion to a marked degree.



ONION SETS

Small, hard, fancy sets.

1 lb. makes a quart. 32 lbs. to the bushel.

ONION SETS—Continued

	Pkt.	Lb.	5 lbs.	Bu. of 32 lbs.
WHITE SILVER SKIN. Fancy	\$.10	\$.25	\$ 1.10	\$ 5.50
JAPANESE YELLOW. A selected strain that grows better and keeps longer than any other sort. Does not shoot to seed....	.10	.25	1.10	5.50

The Red Sets are such poor keepers we have given up keeping them in stock. Onion Sets are scarce this year.

Spray your onions with Hall's Nicotine Sulphate and insure your crop. It is the Thrip that turns the onion tops brown.

PARSLEY

1 oz. will sow a 50 ft. row.

No.		Pkt.	Oz.	¼ lb.
717	EXTRA CURLED DWARF or EMERALD. Very fine moss-like leaves	\$.05	\$.15	\$.40
600	DREER'S DWARF PERFECTION. Fine curled. Fine flavor. Decorative10	.20	.60

PARSNIP

1 oz. will sow 150 ft. of row.

No.		Pkt.	Oz.	¼ lb.
725	GUERNSEY. Broad shoulder, tapering to a point. The best and most productive	\$.05	\$.15	\$.40
727	HOLLOW CROWN. Long smooth. The old stand-by05	.15	.40

PEPPERS

No.		Pkt.	Oz.
818	NEAPOLITAN. Early, large and mild.....	\$.10	\$.35
819	CHINESE GIANT. Largest of all, mild20	.70
834	HARRIS EARLY GIANT. Very large and early ..	.20	.65
820	SWEET MEAT GLORY. Burpee's Pimento, sweet..	.15	.35
823	LARGE BELL or BULL NOSE. Hot, large10	.35
821	RUBY KING. Large, prolific, mild10	.35
837	LONG CAYENNE. Hot, small10	.35
833	BURPEE'S NEW SUNNYBROOK. A small, very sweet Pimento Pepper. Thick fleshed, fine quality, and productive. Sweet as an apple20	.65

Will have a fine lot of Pepper Plants in season. All kinds.

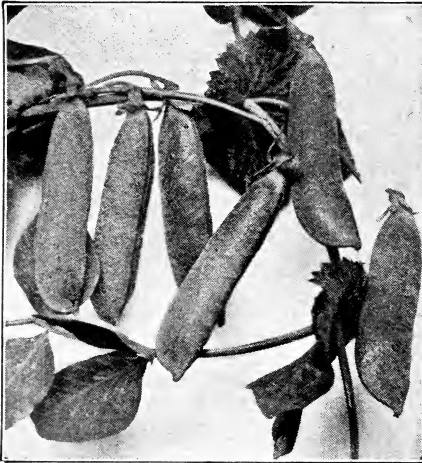
PUMPKIN

1 oz. will plant 25 hills.

No.		Pkt.	Oz.	¼ Lb.	Lb.
861	EARLY SUGAR. A very fine Pie Pumpkin. Yellow skin and flesh	\$.05	\$.15	\$.40	\$.90

PUMPKIN—*Continued*

No.		Pkt.	Oz.	¼ Lb.	Lb.
867	BURPEE'S GOLDEN OBLONG. Large, good quality. 10 to 20 inches long05	.15	.40	1.10
875	GENUINE MAMMOTH. Largest of all	.05	.15	.40	1.15
872	STRIPED CUSHAW. A long-necked squash-like pumpkin of fine quality. Very meaty. Rich yellow flesh05	.15	.40	1.00
1048	WINTER LUXURY or PIE SQUASH. Fine. Light skin, yellow flesh05	.15	.40	1.00
865	LARGE CHEESE. Flattened, skin creamy buff, orange flesh. Fine keeper05	.15	.35	.80

*Gradus Pea.***PEAS**

GRADUS and THOMAS LAXTON grow tall vines and very large pods. The LAXTONIAN and LAXTON'S PROGRESS are dwarf in vine and have large pods and lots of them. These are the four best sorts for market.

The RADIO, BLUE BANTAM, LITTLE MARVEL, CARTER'S DAISY and TELEPHONE are the gardener's favorites for table use and for canning.

I have over 125 bushels of choice new crop pea seed this season. The prices quoted below for bushel lots are cash prices. Add \$1.00 per bushel for time. Have 25 bu. last year's peas we are selling at \$7.50 per bu. while they last. Germination good.

1 lb. of peas will plant 100 ft. of row.

1 to 2 bu. to the acre.

PEAS—Continued

No.		Pkt.	Lb.	2 Lbs.	10 Lbs.	Bu.
739	ALASKA or EARLIEST OF ALL. Pick when small and they are fine	\$.10	\$.30	\$.55	\$ 2.45	\$ 11.50
731	BURPEE'S BEST EXTRA EARLY. One of the best of the smooth-seeded sorts. 2 ft.10	.30	.55	2.45	11.50
732	RADIO. Dwarf, extra early and fine quality. Good for planting in August for Fall crop. 1¼ ft....	.10	.35	.60	2.90	12.50
	LAXTON'S PROGRESS. An im- proved Laxtonian. Very fine. Large pods. Extra early10	.35	.60	2.90	12.00
742	EXTRA EARLY PILOT. A large, smooth-seeded kind. Ripens a lit- tle earlier than Gradus. Fine for first planting for market. 2½ ft.	.10	.35	.60	3.00	13.50
745	GRADUS or PROSPERITY. Earli- est wrinkled seeded kind. One of the best for home garden or mar- ket. 2 to 3 ft.10	.35	.60	2.90	12.00
	GRADUS. From Conn. Fine stock World Record strain. Best for market10	.30	.55	2.50	10.00
746	THOMAS LAXTON. About the same as Gradus. Prolific; very early; fine quality. 2 to 3 ft.....	.10	.35	.60	2.90	12.00
	THOMAS LAXTON. From Conn. Fine stock. Early. Large pods..	.10	.30	.55	2.50	10.00
	LAXTONIAN. From Conn. Hun- dredfold strain. 15 to 18 inches high. Very prolific and about as early as Gradus. Very popular for market. Large pods10	.35	.60	2.70	11.00
754	BLUE BANTAM. A fine strain of Laxtonian. Very sweet10	.35	.60	2.90	12.00
749	PREMIUM GEM. Very dwarf vines, prolific and fine flavor. 2nd early, 1 ft.10	.35	.60	2.90	12.00
751	AMERICAN WONDER. Even more dwarf than Premium Gem. 2nd early, prolific10	.35	.60	2.90	12.00
753	LITTLE MARVEL. One of the best for home gardens. Sweet, prolific, 15 in.10	.35	.60	2.90	12.00
755	NOTT'S EXCELSIOR. Standard for 2nd early. Large pods, pro- lific. 15 in.10	.35	.60	2.90	12.00
792	DISCOVERY. One of the best for large 2nd early peas; fine quality and yield10	.40	.70	3.00	13.50

PEAS—Continued

No.		Pkt.	Lb.	2 Lbs.	10 Lbs.	Bu.
793	CARTER'S DAISY or DWARF TELEPHONE. Only grows 18 inches high and has pods as large as Telephone. Superb quality.....	.10	.35	.60	2.90	
789	STRATAGEM or POTLATCH. One of the best for late dwarf. Very sweet, prolific and large. 2 ft.	.10	.35	.60	3.00	
800	JUNO or DWARF CHAMPION. This is the latest Dwarf Pea, of fine quality. 2 ft.10	.35	.60	2.90	
772	TELEPHONE. Dark podded Strain. If you do not plant these peas too late they will make an enormous crop, and are fine in quality and very large. 4 ft.10	.35	.60	2.90	
784	QUITE CONTENT. The largest podded pea in existence. Sweet. 6 ft.10	.40	.75		
799	CHAMPION OF ENGLAND. The old standard tall variety. 4 ft....	.10	.35	.60	2.90	
815	MAMMOTH MELTING SUGAR. The best edible podded pea10	.45	.85		

All the foregoing prices by the lb. and over are net, postage extra. See Page 3 as to postal rates. Pkts. postpaid.

The above is a fine collection of peas and I have tried to list them in order of ripening. I advise you to select five or six kinds, plant the extra early ones as soon as you can, work the ground and then when ground is a little warmer plant the whole succession, sowing a late kind, 2 or 3 weeks later. That will keep you supplied with peas as long as they will develop properly.

RADISH

1 oz. will sow 50 ft. of drill.

No.		Pkt.	Oz.	¼ Lb.	Lb.
	SAXA. The best and quickest growing Radish. Red, turnip shaped, crisp and sweet. 23 days	\$.05	\$.15	\$.45	\$ 1.15
877	BURPEE'S EARLIEST or SCARLET BUTTON. 25 days. Fine, crisp, juicy and tender05	.15	.45	1.15
878	RAPID RED. Fine. 25 days05	.15	.40	.95
893	SPARKLER or SCARLET TURNIP WHITE TIPPED. Fine. 28 days....	.05	.15	.40	.90
907	FRENCH BREAKFAST. Olive shaped, very fine, quick growing, snappy05	.15	.40	.95
883	SCARLET GLOBE. Long season.....	.05	.15	.40	.95

RADISH—*Continued*

No.		Pkt.	Oz.	¼ Lb.	Lb.
886	CRIMSON GIANT, GLOBE. Large, does not get pithy. Very mild and crisp....	.05	.15	.40	.95
938	WHITE ICICLE. Long, very crisp, sweet and tender. Best long05	.15	.40	.90
963	WHITE CHINESE or CELESTIAL. Best for Winter use05	.15	.40	1.00
910	BURPEE'S NEW RED GIANT. Very large and of fine quality10	.20	.70	
	Mixed Radish. All kinds mixed together, giving a good succession. Large pkg., 10c.				

SALSIFY or VEGETABLE OYSTER

No.		Pkt.	Oz.	¼ lb.
983	MAMMOTH SANDWICH ISLAND. Use like parsnip, for Fall, Winter and Spring	\$.10	\$.25	\$.80

SORREL

		Pkt.	Oz.
839	LARGE-LEAVED GARDEN. Sour grass for Greens	\$.10	\$.20

SQUASH

1 oz. will plant from 25 to 50 hills.

No.		Pkt.	Oz.	¼ Lb.	Lb.
1010	EARLY WHITE BUSH. Scalloped, earliest Patty Pan	\$.05	\$.15	\$.45	\$ 1.20
1018	EARLY GOLDEN CROOKNECK. Bush, fine quality. Use when young05	.15	.45	1.20
1020	GIANT GOLDEN CROOKNECK. Very large. Use when the squashes are young and tender. Fine quality05	.15	.45	1.20
1031	LONG WHITE MARROW or VEGETABLE MARROW. 9 in. long and 4 to 5 in. thick. Bush. White flesh05	.15	.45	1.10
1030	COCOZELLE BUSH. A long, green squash. Does not send out long vines..	.05	.15	.45	1.20
1032	BURPEE'S FORDHOOK. A delicious squash of fine flavor 8 to 10 in. long, good for Summer and Fall. Vining type	.05	.15	.45	1.10
1034	BUSH FORDHOOK. Of the same fine quality as 1032, but in bush form....	.05	.15	.45	1.10
1036	BOSTON MARROW. Fine grained, dry and sweet; golden skin. Fall and Winter. Makes fine pies05	.15	.45	1.10
1038	TRUE WARTED HUBBARD. Best for pies. Green05	.15	.45	1.25

SQUASH—Continued

No.		Pkt.	Oz.	¼ Lb.	Lb.
1040	WARTED HUBBARD. Larger and more heavily warted than No. 1038; fine keeper. Dark green05	.15	.45	1.25
1042	RED or GOLDEN HUBBARD. One of the best for pies. Golden flesh05	.15	.45	1.25
1052	DELICIOUS. The squashes weigh from 5 to 10 lbs. and vary in shape and size, but are uniform in delicious quality and splendid winter keepers05	.15	.45	1.25

The Squash has been found to be one of the vegetables that contain a quantity of those valuable vitamins. Plant squash for your children, and serve it like potatoes, every day.

SWISS CHARD or SILVER BEET

Swiss Chard is one of the best greens there is. Cut outside leaves and it will grow out again and again. One oz. will sow 50 ft. of drill.

No.		Pkt.	Oz.	¼ Lb.	Lb.
137	LUCULLUS. Large stalks and leaves, heavily crumpled	\$.05	\$.15	\$.50	\$ 1.20
136	LARGE RIBBED WHITE. Smooth leaves that wash easily05	.15	.50	1.20
135	FORDHOOK GIANT. Largest and of finest quality. Crinkled leaves10	.25	.70	2.00

SPINACH

1 oz. will sow 50 ft. of drill.

No.		Pkt.	Oz.	¼ Lb.	Lb.
997	KING OF DENMARK. This new Spinach stands longer than any other kind excepting the New Zealand. The leaf is large, dark green and nicely crumpled. Comes early and stays late	\$.05	\$.10	\$.25	\$.60
990	HENDERSON'S LONG SEASON. Thick, crumpled, dark green leaves....	.05	.10	.25	.50
991	BURPEE'S VICTORIA. Good quality..	.05	.10	.25	.50
993	THICK LEAVED ROUND. Very productive. Quality05	.10	.25	.50
999	SAVOY LEAVED. Long standing. Best for Fall sowing05	.10	.25	.50
1005	NEW ZEALAND. The hot weather Spinach. Spreading. Use the tips or new sprouts. Will last till Fall05	.15	.40	.90
992	PRINCESS JULIANA. Dark crumpled leaves. Best second early05	.10	.25	.55

TOMATO SEED

No.		Pkt.	Oz.	¼ Lb.	Lb.
	ALPHA. A new extra early. Ripens evenly. Fine color. Earlier than Earliana according to Dreer. Wide leaf... \$.20				
1097	BURPEE'S SUNNYBROOK EARLIANA. The earliest of all Red Tomatoes	.10	.40	1.35	
	RED HEAD. Early, deep red. Livingston's. Does well on Long Island....	.10	.40	1.20	4.25
1101	CHALK'S EARLY JEWEL. One of the largest, smoothest and finest flavored early bright red tomato10	.40	1.20	4.40
1120	BONNY BEST. Early, very productive, firm, medium size10	.35	1.20	3.90
1087	JOHN BAER. Early. Very prolific, smooth and firm. Fine quality10	.35	1.20	3.90
1114	PONDEROSA. Large, meaty, fine quality. One of the best for home use15	.60	1.75	5.75
1089	MARGLOBE. Disease resistant, fine quality, heavy yielding, mid-season.....	.10	.50	1.75	
1074	STONE. Standard for home use and for market. Firm, good color and a heavy yielder. Best for canning and market..	.10	.35	1.10	3.40
	CLARK SPECIAL B. A selected Stone of unusual merit. One of the best for market. From Conn.10	.35	1.20	4.00
	STONE. Livingston's Selected Seed. Very choice. Originator's stock10	.40	1.30	4.00
	LIVINGSTON'S OXHEART. A new sort. Large pointed25			
	GOLDEN PONDEROSA. Large yellow fruit of finest quality. No acid10			
1108	BURPEE'S MATCHLESS. Burpee claims this to be the best for home gardens, and for market. Large, smooth, bright cardinal red. Even colored10	.35	1.10	4.25
	LIVINGSTON'S GLOBE. Fine for market. Almost Blight-proof; delicious flavor. Color purple, firm10	.40	1.40	

Will have a fine lot of plants from the above strains of seed in season. Would appreciate your early orders if you want plants by the thousand.

December, 1928.

Have been growing Sprouts since 1881 and have the best Sprouts this year that I ever raised. Had two strains of seed and one of them was your Sterling Strain. Want more for next year.

JOHN T. YOUNG.

TURNIP and RUTA BAGA SEED

No.		Pkt.	Oz.	¼ Lb.	Lb.
1159	EXTRA EARLY WHITE MILAN. Best for early	\$.05	\$.15	\$.40	\$.90
1157	EARLY RED or PURPLE TOP STRAP LEAF. A flat, early turnip, of fine quality. Good for Fall and Winter....	.05	.15	.30	.70
1169	WHITE EGG. Early globe-shaped. Fine quality, free from stringiness05	.15	.30	.70
1183	GOLDEN BALL, or ORANGE JELLY. Sweet and delicious05	.15	.30	.70
1191	BURPEE'S PURPLE TOP YELLOW RUTA BAGA. The standard for winter storing. Fine quality05	.15	.30	.70
	NEYLON'S PURPLE TOP RUTA BAGA. A special strain developed by the West End truckers. Extra in quality, size and smoothness10	.20	.60	1.50

PEANUTS

6064 WHITE SPANISH. A small peanut of extra fine quality. The surest cropper for this section.

Per pkt., \$.10; per lb., \$.30; per 10 lbs., \$2.70

HERBS

No.		Pkt.	Oz.
1304	ANISE. Annual, for garnishing and flavoring.....	\$.10	\$.30
1315	CATNIP. Perennial. For seasoning and cats10	.60
1319	DILL. Annual. For dill pickles, soup and sauce....	.05	.15
1321	FENNELL, SWEET. Perennial. For flavoring and salad10	.25
1326	TRUE LAVENDER. Perennial. Use flowers for imparting perfume to linen10	.70
1327	MARJORAM, SWEET. Annual. For seasoning....	.10	.35
1329	ROSEMARY. Perennial. Use leaves for seasoning	.10	.45
1333	SAGE. Perennial. For seasoning10	.40
1335	SAVORY, SUMMER. Annual. For flavoring.....	.10	.40
1341	THYME. Perennial. For flavoring your turkey dressing, also for soups, stews, etc.10	.60

Can get any other kind of Herb you might want at short notice.

December, 1928.

From the 2½ bu. of Fordhook Bush Limas purchased of you in the Spring I picked a fine crop which cleared me home over \$1600.00. I sprayed with Bordeaux and think it paid me well.

GEORGE LESLIE.

FARM AND FIELD SEED

SEED POTATOES

Use 4 to 5 sacks to the acre.

We have a nice lot of Seed for Spring demand, both Cobblers and Green Mountains. All certified Seed. Handsome stock.

	Pk.	Bu.	Sack
IRISH COBBLERS, Maine Grown Seed	\$.60	\$1.75	\$3.75
IRISH COBBLERS, Prince Edward Island60	1.75	3.50
GREEN MOUNTAIN, Prince Edward Island60	1.75	3.50
GREEN MOUNTAIN, Maine Grown Seed60	1.75	3.75
GREEN MOUNTAIN, State Blue Tags60	1.75	3.75
GREEN MOUNTAIN, Vermont Seed60	1.75	3.75

Prince Edward Island, Vermont and New York State Grown Seed comes in 150 lb. sacks. Maine Grown Seed is in 165 lb. sacks.

The above prices are net cash when you get the goods. Time prices are a matter of adjustment. Prices liable to change.

SEED OATS

Use 2 to 4 bushels to the acre.

My Seed Oats are very heavy and therefore it takes a few more pounds to sow an acre than it does of the lighter kinds, but the returns are so much more that it pays well.

SCOTTISH CHIEF. The best Oat that we have ever been able to purchase for this section. Very heavy and prolific. Per pk. of 8 lbs., \$.60; per bu. of 32 lbs., \$1.95.

CORNELLIAN. A new kind. Excellent variety for a cheaper oat. Very prolific. Pk., \$.50; Bu. of 32 lbs., \$1.75.

SEED OATS by the bag. A very heavy Seed Oat packed in 80-lb. bags. Per bag, \$3.00.

If anyone wants to sow Oats for pasture or for plowing under, Seed Oats by the bag are the kind to use, but if you expect to thresh your crop use Scottish Chief or Cornelian. 2 or 3 extra bushels will pay for the extra cost of the seed.

SEED WHEAT

SPRING WHEAT. Marquis, the best Spring Wheat. Very prolific, early. Per pk. of 15 lbs., \$1.00; per bu. of 60 lbs., \$3.40.

WINTER WHEAT, for Fall Seeding. Leap's Prolific. The most prolific, hardy and satisfactory Wheat ever grown in this section. Red kernel, stiff straw, bald. Price on application.

SEED RYE

SPRING RYE, more suitable to sow in the Spring than the Rosen Rye. Fine seed. Per pk. of 14 lbs., \$.85; per bu. of 56 lbs., \$3.00.

SEED RYE FOR FALL SOWING. ROSEN RYE. This is the best and the cheapest in the end as it is re-cleaned and of high germination. Get my prices before ordering elsewhere.

VETCH and CANADA FIELD PEAS

WINTER VETCH. For Fall Sowing. Mix a little in with your Rye for a cover crop. We find that it pays. Price on application.

SPRING VETCH. For Sowing in the Spring for a cover crop to plow under for a late crop. Per lb., \$.12; 10 lbs. or more at \$.09 per lb. Mix with oats.

CANADA FIELD PEAS. For Sowing in Spring and early Summer for a cover crop to plow under for Cauliflower, Brussels Sprouts, etc. Both the Canada Field Peas and the Vetches are Legumes and add fertility to the soil. Inoculate the seed with Mulford Cultures if you are not sure they do well on your farm. Per 10 lbs., \$1.00; per bu. of 60 lbs., \$4.50. Use 1 bu. Peas and 1 bu. Oats to the acre.

SOJA or SOY BEANS

Have the best kind of Soy Beans for this section. Used for plowing under green to build up your soil, or for hay. Sow in May or June.

EARLY YELLOW. Quick maturing, very productive. Per 10 lbs., \$.80; per bu. of 60 lbs., \$3.40.

COW PEAS

Used to improve the soil. Sow in May or June.

WHIP-POOR-WILL. The best kind for this section. Per 10 lbs., \$1.20; per bu. of 60 lbs., \$4.75.

Warning. Do not sow your Cow Peas, Soy Beans, Sudan Grass or Spring Vetch until your ground is warmed up a little. If sown too early they will fail to germinate, or if they do sprout, they will not thrive. They are also helped by inoculation. Use Mulford Cultures.

SUDAN GRASS

If you have lost out on your Summer's Hay crop sow an acre of this and get a heavy crop of succulent, valuable fodder.

We find this the best Grass for Pasture that we have ever tried. Use 15 to 20 lbs. with 1 bu. of Oats, on one acre of ground. Sow after ground warms up on good soil and this acre will keep one cow in good condition all Summer. 2 acres will keep 2 cows and so on.

For Hay use 20 to 25 lbs. to the acre, broadcast, or 10 lbs. in drills and cultivate. Crops of 5 tons to the acre have been grown. Northern seed. Per lb., \$.15; 10 lbs. or more, at \$.12 per lb.; 50 lbs. for \$5.00.

BUCKWHEAT

The best thing to sow on stump land, does well in sour soil. Fine for bees and to smother out bad weeds and quack grass.

JAPANESE BUCKWHEAT. The best kind to use in this section. Very prolific. Very large grain. Per 10 lbs., \$.75; per bu. of 48 lbs., \$2.50.

RAPE SEED

DWARF ESSEX RAPE. Makes a wonderful growth for seeding down hen yards, hog or sheep pastures. Per lb., \$.18; per 10 lbs. or more, at \$.14 per lb.; 50 lbs. for \$6.00.

Mix 10 lbs. Rape and 1 lb. Kale for your Duck Greens.

BARLEY

FANCY SIX ROW. Makes good pasture. Per 10 lbs., \$.50; per bu., \$2.45. Does not rust like oats.

GRASS, CLOVER and ALFALFA SEED

Prices liable to change without notice.

Terms strictly cash.

The Globe Brand is the very best grade of Grass, Clover and Alfalfa Seed on the market. I make my prices just as reasonable as is possible consistent with the quality. It is the very last fraction of 1% in purity that costs money. I believe that it pays big returns, too, as it is truer in seeds than in anything else that "the best is none too good".

My Hay Mixture for one acre is 10 to 12 lbs. of Timothy, mixed with 6 to 8 lbs. Clover, part Red and part Alsike, or all Alsike if you prefer, and sow early in the Spring, alone, or with Oats, or in August and September. If sown in wheat, sow the Timothy in the Fall with the wheat, and the Clover in March or April following.

In sowing Timothy alone without Clover use 15 to 20 lbs. to the acre. If your land is sour and Grass and Clover does not do well as a rule, a little lime sown on top of the ground and harrowed in before sowing the seed would be a great help.

We do not handle foreign grown Clover Seed. All our Clover and Alfalfa Seed is grown in the U. S. A.

Special prices on 100 lbs. and over. Ask us about them.

February, 1927.

I wish to state that the seeds and plants bought of you in 1926 were entirely satisfactory.

H. B. SQUIRES.

GRASS, CLOVER SEED—*Continued*

	5 Lbs. & Over 1 Lb. to Per Lb. 4 Lbs.	
TIMOTHY. The brightest and purest seed on the market. 99.80% pure	\$.11	\$.14
RED CLOVER. Domestic, best grade. Northern grown. Pure42	.45
ALSIKE CLOVER. Does well where Red Clover sometimes fails. Best grade; domestic. Pure42	.45
ALFALFA. Finest Northwestern grown. Pure.....	.32	.35
ALFALFA COSSACK. The best kind of all. Surest, hardiest and makes best quality hay55	.60
ALFALFA GRIMM. Genuine. Stands the winter better than most55	.60
ALFALFA, Canadian Variegated. Very hardy and productive. Mix the four kinds together to get the most successful seeding43	.45
ALFALFA. All kinds mixed together, last year's seed. Germinates O. K. While it lasts, per lb.30	.32
SWEET CLOVER. White blooming, hulled14	.18
CRIMSON CLOVER. Sow in July and August. Price on application.		
WHITE CLOVER. Fine for lawn or pasture.....	.45	.50
RED TOP. Fancy re-cleaned. Fine for Lawns, stump ground or anywhere the ground is sour. Best grade24	.28
KENTUCKY BLUE GRASS. Does best on sweet soil. Best grade. Fine for lawns, pasture and orchard....	.40	.45
ORCHARD GRASS. Earliest pasture26	.30
GOLDEN MILLET. Sow in June for pasture or hay09	.11
HUNGARIAN GRASS. Easier to cure than the Golden09	.11
JAPANESE MILLET. Considered the best kind of all09	.11
SUDAN GRASS. Grows something like Sorghum. See page 27. 50 lbs. for \$5.0012	.15
STERLING PASTURE MIXTURE. My blend of the best kind of Grass and Clover Seed, suitable for growing for pasture. State if you do not want Orchard Grass in it as some do not like this grass. Contains some White Clover. Use 20 to 40 lbs. to the acre26	.30



Summer Residence of Cornelius Hearn

LAWN MAKING

Lawn making has been reduced to a science by the Department of Agriculture. Experiments have demonstrated that the stand-by of lawns in this country, where lawns can be made, is Kentucky Blue Grass; and that the best method of obtaining a Blue Grass lawn is to sow a mixture containing Red Top. The latter germinates more quickly, and helps make a thick lawn the first few years, but gradually gives way to the spreading blue grass. White clover is usually mixed in, where clover is not objectionable, because it helps thicken the early turf, and secretes nitrogen from the air, which helps the grass. Our grass seed is exactly what we represent, re-cleaned and free from weeds.

Loosen the soil in which a new lawn is to be made to a depth of at least five inches, and lighten it with humus or several inches of sand, compost or manure if it is heavy and inclined to bake. Apply fertilizer liberally, either Sheep Manure, Bone Meal, V. C. Fairway or a commercial fertilizer. Peat Moss is also good.

Sow in the early spring when cool weather and ample rainfall will insure complete germination and a good start for the seedlings before hot dry weather comes. If seeding must be delayed, special precautions must be taken to prevent the ground drying out. Early fall is a very desirable time to plant.

See that the seed is well covered. Rake it into a new seed bed and roll so that the soil is firmed over the seed. Where seed is sown on an old lawn always cover it with a top dressing of sand or soil and fertilizer. Seed thrown on the top of hard ground has no chance to grow and will merely wash off.

Use lime if you think soil is inclined to be sour. If sorrel comes in natural it is a sign of a lack of lime.

LAWN GRASS SEED

5 Lbs.
& Over 1 Lb. to
Per Lb. 4 Lbs.

No.

	STERLING MIXED LAWN GRASS. I prepare this mixture myself from the highest grade Kentucky Blue Grass, Fancy Red Top and White Clover and a little Creeping Bent. This mixture has given the very best satisfaction throughout Long Island. Quick growing and permanent. 25 lb. lots at 36c per lb.; 50 to 100 lb. lots at 35c per lb.	\$.37	\$.40
	PARKWAY MIXTURE. This is my own mixture. It contains no White Clover but a nice lot of Creeping Bent. The finest of low growing grasses. 25 lbs. at 39c per lb.; 100 lbs. at 38c per lb.40	.45
6145	FORDHOOK FINEST LAWN GRASS. Burpee's best. A mixture of many fine Grasses suitable for lawns and contains none that makes bunches and clumps. 25 lbs. or more at 34c per lb.....	.36	.40
	CREEPING BENTGRASS. <i>Agrostis Stolinfera</i> True. This is the very finest grade of the Bents and produces a weedless lawn, as it thrives on sour soil where weeds and other grasses will not grow70	.75
	SHADY NOOK. Where there is only partial shade the other Lawn Grasses are all right but where the shade is quite dense use this special mixture	.40	.42
	WHITE CLOVER. Very best grade45	.50
	FANCY RED TOP. Re-cleaned. Fancy24	.28
	KENTUCKY BLUE GRASS. Best grade40	.45

For a good, permanent lawn, use 1 lb. lawn seed to 400 sq. feet., 80 to 100 lbs. to the acre. For reseeding an old or poor catch, use half that amount. For quick results use a heavier seeding.

January, 1929.

Had a fine crop of Cauliflower from your Sterling Erfurt seed. They yielded well and I received top price for them as Mr. Horace Booth will tell you. They were very white and no culls. Am recommending your seed to my neighbors.

GEO. BERKOSKI.

HUMUS

This is one of the best Lawn Makers, especially for poor soils.

Mix 100 lbs. of this Dry Humus to a plot 20 by 20 and see the wonderful way the grass will grow where it is used. Also fine for spading in your flower beds, only use it in a larger proportion than above.

Per Bag, about 100 lbs.	\$ 2.25
Per ton of 2000 lbs. (20 Bags)	35.00

SHEEP AND GOAT MANURE

Fine for Lawns, Gardens and Flower Beds. Also the best thing to top-dress seed beds to insure a good crop of Cauliflower and Brussels Sprout plants.

Sheep and Goat Manure is of better mechanical condition and of higher quality than plain Sheep Manure.

10 lb. Bag	\$.50
25 lb. Bag	1.00
100 lb. Bag	3 00
500 lbs. (5 bags)	12.50
2000 lbs. (20 bags)	42.00

All the above prices are net cash.

BONE MEAL

3% Ammonia, 50% Bone Phosphate

One of the best fertilizers for Lawns, Roses, Trees, Flower Gardens and also for top-dressing Grass lots. Best grade. Very fine.

10 lb. Bag	\$.60
25 lb. Bag	1.25
100 lb. Bag	4.00
500 lbs. (5 bags)	16.00
2000 lbs. (20 bags)	50.00

The above prices are net cash.

RAW BONE MEAL

4½% Ammonia, 47% Bone Phosphate.

The best of all for flowers, roses and hot house work. Good for Poultry too.

10 lb. bag	\$.75
25 lb. bag	1.50
100 lb. bag	4.50

Special price on larger lots.

GERMAN PEAT MOSS

A fine ground Peat moss, fine for mulching trees, shrubs, perennials or mixing with soil to make it of good texture. Holds moisture well.

25 lb. bag	\$1.00
Bale of about 200 lbs.	5.00

GATOR HIDE MULCH PAPER

TYPE A—for Annuals, light weight, 18 inches wide, 300 yds. long. Per roll	\$3.50
TYPE A—36 inches wide, 300 yards long. Per roll	7.00
TYPE B—Heavy weight for mulching Perennials, Evergreens and all Garden work.	
18 inches wide, 150 yards long. Per roll	3.50
36 inches wide, 150 yards long. Per roll.....	7.00
Results from using this Mulch Paper have been wonderful.	
Send for booklet, "The Miracle of Mulch Paper."	

NITRATE OF SODA

Use 1 to 2 bags to the acre on your hay ground, in May, and for your Cauliflower and Sprouts in September.

100 lb. Bag, re-ground very fine	\$ 4.00
500 lbs. (5 bags)	16.00
2000 lbs. (20 bags)	Price on Application

The above prices are net cash.

LIME

Hydrated Lime is the most easily assimilated Lime there is. This is very fine for Lawns and Gardens. Also for seeding down grass, preparing a seed bed for your Cauliflower field, only do not use it where you will plant Potatoes within a few years.

10 lb. Bag	\$.25
50 lb. Bag85
500 lbs. (10 Bags)	7.50
2000 lbs. (40 Bags)	20.00

The above prices are for net cash.

GARDEN FERTILIZER

A Sun-Rise Brand formula analysing 6% Ammonia, 9% Phos. Acid and 5% Potash, suitable for any growing crop and most especially your Garden.

10 lb. Bag, 6-9-5	\$.50
50 lb. Bag, 6-9-5	2.00
125 lb. Bag, 6-9-5	3.50

A TRIBUTE TO STERLING'S ANNUAL FLOWER PLANTS FROM ONE WHO HAD THE FINEST FLOWER GARDEN IN THIS SECTION.

October 3rd, 1927.

After great success with your flower plants for years at my summer home at New Suffolk, this season, I think, tops them all.

I had one bed about four hundred feet long with Summer Cosmos, Zinnias, Marigold (both lemon and orange), some Straw-flowers, Petunias and Asters with a privet hedge for a background which made a wonderful picture. It was very much admired. Also had one large bed of Asters several colors. Some of the Zinnias grew the size of a saucer and the Marigolds would fill a tea cup. These flowers have been in bloom almost three months and will continue until frost, except the Asters which are about through.

I still have the Chrysanthemums purchased from you several years ago and they look like a big crop, but not open as yet.

Certainly setting out your plants instead of sowing seed makes for the best results.

Hope to have my order in early next season.

CORNELIUS HEARN.

V-C FAIRWAY FERTILIZER

For Lawns and Grass

To have a lawn of closer, faster-growing grass that resists drought, stays greener—constantly thickens and spreads—use V-C Fairway Fertilizer.



This is the treatment now used on the lawns of country estates, polo fields and on the most famous golf courses.

Fifteen times as rich as manure; costs not more than 10 cents for each 100 square feet to be treated. Practically no odor.

Prices

100-lb. Bag (enough for 5,000 sq. ft.)\$5.00
50-lb. Bag (enough for 2,500 sq. ft.) 3.00
25-lb. Bag (enough for 1,250 sq. ft.) 1.75
10-lb. Bag (enough for 500 sq. ft.) 1.00

Convenient, easy to handle. Complete directions for lawn treatment on every bag.

BLOOMAID

For Flowers, Shrubs, Vegetables

If you want your flowers to bloom earlier and longer, your shrubs and hedges to be greener, thriftier, we recommend that you use Bloomaid. Brings blooms ten days to two weeks earlier—makes plants double the size of those not treated.

Use it in the vegetable garden, around shrubs and to enrich the soil in window boxes and flower pots.



Fifteen times as rich as manure; does not bring in weed seed or the spores of plant diseases.

Bloomaid Prices

Tablet Form (125 Tablets)\$.25
Liquid Form (8-oz. Bottle)50
Pulverized Form:	
1-lb. Can25
5-lb. Container50
25-lb. Bag 1.75
100-lb. Bag 5.00

STERLING LAWN GRASS SEED PLEASES.

Never mind receipt. Thanks. The 30 lbs. Sterling Lawn Grass Seed is very fine and I will want more later.

N. L. CORWIN.

July 27, 1927.

I have a three-cornered piece of new lawn from your Sterling mixture that I would like to have you take a picture of. The finest piece of lawn on Shelter Island.

FRANK W. SIMONS.

FLOWER SEEDS

BURPEE'S AND DREER'S ANNUALS

No.		Pkt. ¼ Oz.	Oz.
1072	AGERATUM. Blue Ball. 6 inches. Finest for border	\$.15	
1505	AGERATUM. Blue, fine for borders and beds	.10	\$.30
1508	AGERATUM. Tom Thumb. Blue border plant 8 to 12 inches tall. Blooms all Summer....	.10	.30
1689	ASTER. Queen of the Market. Earliest. Mixture of 8 colors. 15 inches high.....	.10	.40 \$1.25
1614	ASTER. Crego Giant Mixture. Very large flowers. Petals curled. 8 colors. 2 ft. high	.10	.40 1.25
1735	ASTER. Fordhook Favorite Mixture. Finest American types. Mixed colors and types....	.10	.40 1.25
7788	ASTER. Burpee's American Beauty Collection. One of the largest and finest types. 1 pkt. each of six colors. The collection, \$.50		
1674	ASTER. California Giants. Newest kind. Very large, beautiful flowers. Mixed20	.75
1469	ASTER. Dreer's Superb Late Branching. Dreer's finest collection of 8 colors. Col., 60c.		
1442	ASTER. Dreer's New Red Sensation. Reddest of all15	
1524	SWEET ALYSSUM. Little Gem. White. Free blooming. One of the best for beds and borders10	.20 .60
1100	ALYSSUM. Lilac Queen, Deep Lavender-Lilac. 6 inches10	
1549	ANTIRRHINUM or SNAPDRAGON. Half Dwarf. 24 beautiful shades and colors.....	.10	
1719	ANTIRRHINUM. Giant Mixed. Burpee's 13 new Giants in mixture15	
1159	ANTIRRHINUM. Dreer's Super-Giant Snapdragon. 6 newest shades. Collection \$1.00.		
2687	BABY'S BREATH. Annual. White. Fine for cutting10	
2690	BABY'S BREATH. Delicate Pink. Very beautiful10	
1759	BALSAM. Old fashioned Lady Slipper. Defiance Mixture of 9 shades and colors10	.25
1805	CALENDULA or SCOTCH MARIGOLD. Double flowers. A complete mixture10	.15 .30
1680	CALENDULA RADIO. Dreer's newest. Quilled, double, rich golden yellow25	
1809	CALLIOPSIS. Golden Wave. Bright Yellow with a dark brown center10	.25 .60
1816	CANDYTUFT. Giant Hyacinth Flowered. Finest white. Fine for borders10	.25 .60

ANNUAL FLOWER SEEDS—*Continued*

No.		Pkt.	¼ Oz.	Oz.
1864	CELOSIA. Magnificent Plumed Cockscomb. Burpee's best mixed10	.25	
1851	COCKSCOMB EMPRESS. Dreer's finest. Rich crimson. Large10		
1885	CENTAURIA. Double Cornflower. Mixed....	.10	.20	
1890	CORNFLOWER. Dreer's double Bachelor's Buttons. 6 colors mixed10		
1942	COSMOS. Early Large Flowering. Mixed10	.20	.60
1963	COSMOS. Early Double Flowering. White, Pink and Rose, mixed or separate colors. Will throw a good proportion of double flowers and will bloom early. Very beautiful15	.65	2.50
1931	CHRYSANTHEMUM. Dreer's Coronarium. Double mixed. A fine Annual for cutting. Sometimes called Painted Daisies10		
2032	DIANTHUS. Fordhook Favorites. Mixed old fashioned pinks. All the best kinds10	.25	
1994	DIANTHUS or CHINESE PINK. Hedde- wigii. Fine, large double mixed10	.35	
2055	ESCHSCHOLTZIA or CALIFORNIA POP- PY. Sunset Mixture. All the best kinds...	.10	.20	
2065	CAL. POPPY. Ballet Girl. Large crinkled petals. Carmine outside, creamy white inside15	.40	
2049	CAL. POPPY. Golden West. Deep orange base, large. The most beautiful of all10	.20	
2200	FOUR O'CLOCK. Tom Thumb. All colors10	.15	.30
2086	GAILLARDIA. Double Mixed. Blanket Flower10		
2846	EVERLASTING STRAWFLOWER. Mixed colors. Makes a beautiful Winter bouquet. Cut before fully opened10	.35	
2729	STRAWFLOWER. Dreer's Monstrosum. Col- lection of six colors. 6 pkts. for 50c.			
2469	DREER'S EVERLASTING FLOWERS. 1 pkt. each of the 8 finest kinds, collection of 8 kinds, 50c.			
2118	KOCHIA or BURNING BUSH. Green bushes turning red in the Fall10	.20	
2139	LARKSPUR. Tall, double, dark blue10	.25	
2124	LARKSPUR. Burpee's Best Mixture. Tall...	.10	.25	
2938	LARKSPUR. Dreer's 6 lovely colors. Tall, beautiful spikes. Collection of 1 pkt. each of the 6 finest colors, 50c.			
	LUPINE. Annual. Collection of four shades illustrated in color in Dreer's Catalog. Col- lection, 30c.			

ANNUAL FLOWER SEEDS—Continued

No.		Pkt.	¼ Oz.	Oz.
2178	MARIGOLD ORANGE BALL. Magnificent Deep Orange. Large free bloomer. Tall African. 3 ft. high10	.30	.90
2176	MARIGOLD LEMON BALL. Immense double flowers of a lighter color than 2178. 3 ft. . .	.10	.30	.90
2185	MARIGOLD ORANGE BALL. Double Dwarf French Marigold. Rich Golden Yellow. 1 ft.	.10	.30	
2187	MARIGOLD GOLD STRIPE. Golden yellow striped with mahogany red. Densely double. 1 ft.10	.30	
2226	MIGNONETTE. White Pearl. The best White. Large sweet scented trusses10	.40	
2232	MIGNONETTE FORDHOOK FINEST MIXED. A mixture of the very best kinds..	.10	.25	
2354	NASTURTIUM. Tom Thumb, Gorgeous Mixture. Burpee's Best. All colors. ¼ lb., 50c; per lb. \$1.80, postpaid05	.05	.15
3110	NASTURTIUM. Tall Fordhook Favorites. Burpee's Best Giant Flowering. All colors.. ¼ lb., 45c; \$1.40 per lb. postpaid. Can get you the separate kinds of Burpee's Nasturtiums if you prefer. Any color.	.05	.05	.15
2513	PANSY. Burpee's Blend of Giant and Fancy types. Unsurpassed waved petals25	2.25	
3510	PANSY. Dreer's Royal Exhibition mixture. This is Dreer's finest mixture as to size, texture and colorings50		
2556	PETUNIA. Enchantress Mixture. Dwarf, all colors. One of the best mixtures for bedding	.10		
2567	PETUNIA. Burpee's Defiance. The largest flowering kind. Beautiful mixed colors.....	.25		
2539	PETUNIA. Elk's Purple. This is something special. Deep purple flowers, extra large....	.25		
2574	DOUBLE PETUNIA. Fordhook Fancy Fringed. One of the most beautiful mixtures of Petunias. All shades and colors. Seed very valuable. Small pkt.35		
3563	PETUNIA. Dreer's Rose of Heaven. Rich rose colored15		
3564	PETUNIA. Dreer's Rosy Morn. The most popular kind for Window Boxes, Hanging Baskets or bedding15		
3559	PETUNIA. Dreer's Balcony Petunias. 1 pkt. each of Dreer's 4 best kinds, Blue, Rose, White, Crimson. Collection, 60c.			
2581	PHLOX DRUMMONDI. Fordhook Finest Mixed. All of Burpee's finest in mixture. One of the finest flowers for Bed or Border..	.10	.30	

ANNUAL FLOWER SEEDS—*Continued*

No.		Pkt.	¼ Oz.	Oz.
2590	PHLOX. Fordhook Crimson. Massive flower head of a beautiful shade10		
2607	PHLOX. Starred and Fringed. New and unique. Shades of Red, Rose and Pink.....	.15		
2601	PHLOX. Violet. Large and bright10		
2644	POPPY. Burpee's Mixture of large Double Peony Flowered. Beautiful shades and colors10		
2642	POPPY. Double Carnation Flowered. Burpee's mixture of this most popular and beautiful sort. A wide range of colors10		
2659	PORTULACA. Double mixed. Brilliant mixture of many bright colors10		
2652	PORTULACA. Single mixed. Burpee's finest10		
3867	RICINUS or CASTOR OIL BEAN. Red Spire. Dreer's most ornamental. Plant a few of these in your lawn and garden and they claim that the Ground Moles will disappear.....	.10	.15	.40
2707	SCABIOSA. Pin cushion Flower. Large Flowered Double Mixed. One of the best sorts for cut flowers10		
3920	SALPIGLOSSIS. Velvet flowers. Dreer's finest mixtures10		
3936	SALVIA. America. Dreer's finest. Early flowering, very profuse blooming and about 2 ft. in height. Very uniform25	1.00	
3932	SALVIA. Bonfire. Brilliant scarlet spikes stand clear from the dark green foliage and just cover the plant which grows 2 ft. high..... Will have a fine lot of plants from both these kinds of seed. See page 46.	.15	.75	

BURPEE'S SWEET PEAS

None Better

No.		Pkt.	¼ Oz.	Oz.
3599	SWEET PEAS. The Burpee Blend. This is Burpee's finest mixture of all the best Orchid-flowered varieties. All colors and shades. ¼ lb., \$.70; lb., \$2.00 Postpaid	\$.10	\$.10	\$.20
3600	SWEET PEAS. Mixture of Light Shades. For one who prefers all the light shades and none of the darker ones. Beautiful, large blossoms ¼ lb., \$.80, 1 lb., \$2.50 Postpaid.	.10	.10	.25
3601	SWEET PEAS. Burpee Novelty Mixture. Contains all the newest large Orchid flowering sorts. All shades and colors. ¼ lb., \$1.00.....	.10	.10	.30

BURPEE'S SWEET PEAS—*Continued*

No.		Pkt. ¼Oz.	Oz.
7321	SWEET PEA COLLECTION. One pkt. each of the six newest Orchid flowered Sweet Peas Pink, Blue, Red and Rose. Enough for 10 or 15 ft. of row. Collection, \$.75.		
7340	SWEET PEA COLLECTION. Burpee's Best 12. One pkt. each of 12 of their best kinds. All different and all very beautiful. \$1.00 Post Paid. Will plant 40 ft. of row.		
7310	SWEET PEA COLLECTION. 20 Popular Sweet Pea Collection. One pkt. each of the most popular kinds. All different shades. This collection will plant a row 75 ft. long. \$1.00 Postpaid.		
4020	STOCKS. Improved large flowering 10 weeks. Mixed colors. Fine for bedding10	
2765	SUNFLOWER. Double Chrysanthemum flowered. Fine for border, or hedge10	.20 .50
2762	SUNFLOWER. Red. One of the best fancy..	.10	.20 .50
6075	SUNFLOWER. Large Russian. The largest of all. Per ¼ lb., \$.20; per lb., \$.3505	.05 .10
2776	VERBENA. Fordhook Famous. Mammoth, mixed. Fine for borders and boxes10	
2813	ZINNIA. Burpee's Giant Mammoth Mixture. Includes ten of the newest and best kinds..	.10	.30 .90
2812	ZINNIA. Burpee's New Cactus Flowered. Like a Cactus flowered Dahlia. All colors15	.50 1.50
2834	ZINNIA. Burpee's Dahlia Flowered Mixture	.15	.50
7545	BURPEE COLLECTION OF THE SIX BEST MAMMOTH ZINNIAS in separate colors. Collection of 1 pkt. of each, 50c.		
3195	ZINNIA. Burpee's New California Giants. The largest of all; 6 colors mixed15	
4446	ZINNIA. Dreer's large flowering. Deep double Salmon Rose10	

All the above Flower Seeds are priced Post Paid. Burpee and Dreer puts out many other kinds and varieties that I have not listed. Also many collections of flower seeds. If in need of any kind that I have not listed let me know and I will get it for you and may be able to save you time and money. See following pages for Perennial and Vine Seeds, and Plants.

September, 1927.

All the Evergreens and Annual Flower Plants have lived and the flowers are blooming abundantly.

MRS. CHAS. W. MOORE.

PERENNIAL FLOWERS

Perennial Flower Seeds may be sown in February or March indoors and transplanted or may be sown where you want them later and thinned out. They will bloom the following year. If you want them to bloom this year buy our Perennial Plants listed on page 47.

No.		Pkt. $\frac{1}{4}$ Oz.
1206	AQUILEGIA or COLUMBINE. Dreer's Long Spurred Hybrids. Beautiful. Many colors, mixed	\$.15
3726	BELLIS or ENGLISH DAISY. A small double flowering daisy. Blooms early. Double mixed	.10
3768	COREOPSIS. Large yellow, free blooming. Fine for cutting. Blooms in late Spring and Summer.	\$.10
3734	CAMPANULA. Cup and Saucer Canterbury Bells. Mixed. Beautiful. Double	.10
3733	CAMPANULA. Bellflowers. Burpee's Best Single Mixed colors	.10
1739	CAMPANULA. Collection. Dreer's finest Cup and Saucer in 4 colors. Collection 4 pkts. for 50c.	
3763	CENTAURIA MONTANA. Hardy Cornflower. Blue	.10
3915	CARNATION. Burpee's Tree, Mixed. One of the most beautiful of all Hardy Pinks	.15
1948	DAISY. Dreer's Alaska Shasta Daisy. Large blooms 5 inches across, pure glistening white	.25
3771	DAISY. Burpee's Floradale. Curved, loose petals. Beautiful	.25
3769	DELPHINIUM. Vanderbilt Hybrids. Large spikes covered with double and semi-double blooms of exquisite colors	.30
2221	DELPHINIUM BELLAMOSUM. Rich deep blue. Free blooming	.20
2219	DELPHINIUM BELLADONNA. Everblooming. Bright torquoise blue. Improved	.20
3783	DIANTHUS or HARDY GARDEN PINK. Pheasant's Eye. Single sweet scented. Rose. Blossoms continuously. Very sweet and beautiful	.10
3805	GAILLARDIA. Grandiflora Superb Mixed. Grows 2 ft. high. Fine for cutting. Crimson center	.10
3807	BABY'S BREATH. Single. Fine for bouquets	.10
3799	BABY'S BREATH. Double. Very beautiful, and one of the best for cutting	.25
3812	HIBISCUS or MARSHMALLOW. Burpee's Giant Mallow Marvels. Blooms enormous, 4 to 6 ft. high	.10
3822	HOLLYHOCKS. Double Mixed. Very beautiful	.10
3828	HOLLYHOCKS. Single, mixed. Very free blooming	.10
3826	HOLLYHOCK. Allegheny. Single and semi-double with fringed edges. Mixed colors	.10

PERENNIAL FLOWERS—*Continued*

No.		Pkt. $\frac{1}{4}$ Oz.
2791	HOLLYHOCK. Newport Pink. Finest pure pink. Double15
2361	FOXGLOVE or DIGITALIS. Dreer's Giant Shirley. Beautiful tall spikes of white, pink, rose, yellow and purple mixed15
3058	LUPINES. Mixed, white, blue, pink and rose.....	.10 .25
3060	LUPINES. Dreer's New Hybrid Mixed. All colors, some of them new and unusual25
3231	MYOSOTIS or FORGET-ME-NOT. Dreer's Alpestris Royal Blue. The finest dark blue. 9 inches10
3851	ORIENTAL POPPY. Orientale Japonica. Large scarlet flowers. The most showy of all10
3741	ORIENTAL POPPY. Dreer's Oriental. Orange Scarlet10
3851	ORIENTAL POPPY. Burpee's Red10
3870	PYRETHRUM. Roseum. One of the most graceful flowers. Rose, pink and white10
3873	RUDBECKIA PURPUREA. One of the finest perennials, blooming all summer. Purplish daisy-like flowers15
3876	SCABIOSA. Caucasia. Fine for cutting and for border. 2 ft. Soft lavender blue15
4296	SWEET WILLIAM. Dreer's Giant Double Mixed..	.15
3890	SWEET WILLIAM. Scarlet Beauty. The newest shade of giant doubles. Fine for cutting or bedding15
3997	STATICE. Latifolia. Purplish Blue flowers. Fine for winter10

Can get any other Perennial that you might want at very short notice. Also can get larger quantities if you so desire.

Climbing Flowers and Vines

No.		Pkt. $\frac{1}{4}$ Oz.	Oz.
3021	MORNING GLORIES. Burpee's Best Mixture. A quick growing vine and free blooming....	\$.05	\$.10 \$.20
3028	MORNING GLORIES. Mixed Imperial Japanese. Largest and finest of all. All colors..	.05	.10 .30
2989	MOONFLOWER. Burpee's Mixture of all kinds and colors. They bloom at night and on dull days10	
2906	BALLOON VINE. Makes balloon-like seed pods10	
2160	CYPRESS VINE. Fern-like foliage and masses of beautiful, star-shaped flowers. Dreer's mixed15	
2158	CARDINAL CLIMBER. Brilliant Cardinal flowers. Wants full sun15	

CLIMBING FLOWERS AND VINES—*Continued*

No.		Pkt. ¼ Oz. Oz.
2975	CLIMBING FOXGLOVE. A beautiful annual Mexican climber. Purple15
2974	KUDZU VINE. A Perennial Climber of very rapid growth. Purple flowers10
1131	BOSTON IVY (<i>Ampelopsis Veitchii</i>). The best Perennial climber for chimneys, walls or sides of houses10 .20
8922	CINNAMON VINE. Grows from bulbs. Nice green foliage and small white flowers. Delicate fragrance. Each10
2913	COBAEA SCANDENS. Cup and Saucer Vine. Very beautiful15

NURSERY DEPARTMENT

Climbing Plants and Vines

	Each
AMPELOPSIS VEITCHII or Boston Ivy. Best for Chimneys and walls. Large 2 year old plants	\$.50
BIGNONIA RADICANS or Trumpet Vine. Large 2 year plants40
CLEMATIS PANICULATA. Blooms freely in August and September. Pure white blossoms. Strong plants40
CLEMATIS JACKMANI. Beautiful Purple blossoms.....	.90
HONEYSUCKLE, Halls Japanese. Very fragrant50
HONEYSUCKLE. Winter Evergreen. Very large plants.....	.75
WISTERIA. Purple. Large grafted plants75

POTTED VINES FOR WINDOW BOXES

4-inch Pots

	Each	Per Doz.
ENGLISH IVY. Greenish purple leaves. Hardy. 2 in... \$.25	.25	\$2.50
ENGLISH IVY. Extra large50	
GERMAN IVY. Bright green leaves. Quick growing..	.25	2.50
VARIEGATED VINCA. Green and white leaves. One of the best for window boxes25	2.50

When sold in pots, the pots are 5c extra, but can be returned and amount paid for them credited.

FLOWERING SHRUBS

Without shrubbery, a house, no matter how expensively built, seems stark and bare like a factory building. When tastefully planted with shrubs, it becomes cozy, warm and inviting as if it grew out of the soil on which it stands. The humblest cottage is glorified and the largest mansion is made homelike.

Each

AZALIA. Different kinds and sizes, including rosy purple, fiery red, salmon and other shades. Beautiful. \$1.50 to \$3.25 each.	
ALTHEA or ROSE OF SHARON. Pink, red, purple and white. Double flowers. Bloom in Aug. and Sept. 2 to 3 ft...	\$.60
ALTHEA. Tree form. Colors as above. 3 to 4 ft.....	1.00
BUTTERFLY BUSH or SUMMER LILAC. Blooms all summer. Cut back every Spring. Extra large plants.....	.60
CORNUS FLORIDA. White flowering dogwood. 3 to 4 ft....	1.50
CORNUS SIBIRICA. Red twigged or coral Dogwood. Nice bushes50
CRAB APPLE. Betchel's Flowering. Beautiful double pink rose-like blooms	1.25
DEUTZIA. Pride of Rochester. Large plants	\$.80
GOLDEN ELDER. Yellow leaves. Extra large80
HYDRANGEA-PANICULATA. Large white blossoms, growing to pink. Blooms late Summer60
HYDRANGEA ARBORESCENS. Hills of Snow. Snow white flat blooms70
LILAC. Common purple. Nice large plants60
LILAC. White. Very beautiful and sweet60
LILAC. 4 of the best double kinds. Beautiful. Each.....	1.00
PHILADELPHUS. Coronarius. Mock orange. Large plants	.80
PHILADELPHUS VIRGINALIS. New. Sweetest of all. 2-3 ft.	1.00
SPIREA THUNBERGI. Early blooming. White50
SPIREA PRUNIFOLIA or BRIDAL WREATH60
SPIREA VAN HOUTTEI. Graceful, arching sprays. 3 to 4 ft.60
SPIREA ANTHONY WATERER. Red flowers, late60
SNOWBALL. Viburnum Sterile. Nice plants, 2 to 3 ft.....	.80
SNOWBALL. Viburnum Plicatum or Japanese. Beautiful in flower and foliage. Plants 2 to 2½ ft.	1.00
SNOWBERRY WHITE. Large white berries. 3 ft.70
SNOWBERRY RED. Clusters of red berries. 3 ft.60

FLOWERING SHRUBS—*Continued*

Each

RHODODENDRONS. Beautiful Evergreen Shrubs. Carolinianum, rose pink, Catawbiense, rosy purple and Maximum, light pink. Balled and baled. \$3.00 to \$6.50.

KALMIA or MOUNTAIN LAUREL. Rosy pink or white, \$1.25 to \$3.00.

RHODOGRO. An acid humus to make your Rhododendrons and Azalias thrive. 10 lb. bag, 75c; 25 lb. bag, \$1.50; 100 lb. bag, \$5.00.

WEIGELA ROSEA. Rose colored flowers60

WEIGELA. Eva Rathke. Deep red blossoms85

Can get you any other kind of shrub that you might want. Send us your requirements and let us figure on them. Shrubs late in season with clump of dirt on roots. Balled and baled at 25c each, extra.

CLIMBING ROSES

All my Roses are 2 and 3 years old.

AMERICAN BEAUTY. Rich rosy crimson\$.75

PAUL'S SCARLET CLIMBER. One of the best75

DOROTHY PERKINS. Large cluster of beautiful pink flowers .60

CRIMSON RAMBLER. The most popular of all60

DR. VAN FLEET. Long pointed buds. Flesh pink. Beautiful .75

SILVER MOON. Pure white. Large flowers75

TAUSENSCHON. Soft pink. Thornless, large75

PRIMROSE. The new Hardy Yellow Rambler. Dreer's best yellow.. 2 yr. 1.50

BABY RAMBLERS. 4 kinds in pots for Mother's Day. Will have a large stock in bud and bloom, 8-inch pots, at \$1.50 each.

EVERBLOOMING AND HYBRID TEA ROSES

Large 2-year plants.

Each

FRAU KARL DRUSKI. Best white 1.00

GRUSS an TEPLITZ. Rich scarlet, free blooming75

SOUV. de CLAUDIOUS PERNET. Beautiful yellow. Large 1.00

RADIANCE. Brilliant Carmine Pink. One of the best. Potted 1.00

RED RADIANCE. Bright cerise-red. Potted 1.00

DUCHESS of WELLINGTON. Intense saffron yellow. Very fragrant. Potted 1.00

Mme. ALBERT BARBIER. New. Very beautiful white suffused with soft flesh pink and golden apricot centre and base.. 1.50

BETTY. Coppery-rose. Beautiful, especially in the autumn.... 1.00

ROSE HILL. The new rose for 1929. Beautiful pink. Potted.. 1.50

EVERBLOOMING AND HYBRID TEA ROSES—*Continued*

Each

ROSES in flower. Have several kinds listed above potted and in flower in hot houses at 50c to \$1.00 above list price.

POLYANTHA. Crimson Baby Rambler. XXX grade. Potted in bud and bloom for Mother's Day 1.50

POLYANTHA. Golden Salmon. Dreer's newest. 2 year grafts 1.00

DREER'S POTTED ROSES. Will have a full supply of Dreer's Roses always on hand, the kinds listed above and many others, including Los Angeles, Mme. Edouard Herriot, Padre, Edel Francis Scott Key, Gorgeous, Killarney, Ophelia, Premier, Mme. Butterfly and Willowmere, at \$1.00 each.

Can get you any kind that you might want not listed above at reasonable prices, in hardy Hybrid-teas, Everbloomers and Climbers.

Roses by Parcel Post. Postage will be 10c per plant extra.

CHRYSANTHEMUMS

Will have a nice lot of potted plants for Spring and Summer setting. White, Yellow, Pink, Red and Golden Bronze. Each ,20c; \$2.00 per doz. Also will have a fine exhibition of blooms in the Fall. All colors.

HARDY PHLOX

One of the finest Summer blooming Perennials.

We have a fine assortment of Hardy Phlox. 2 year old plants.

ANTONIE MERCIER. Bluish lilac.

BRIDESMAID. White, carmine eye.

BACHANTE. Intense Tyrian rose.

BEACON. Cherry red.

BARON VON DEDEM. Orange red.

CHAMPS ELYSEE. Rosy magenta.

ENCHANTRESS. Salmon pink, dark red eye, 35c.

FIREBRAND. Bright red, 35c each.

GRUPPENHANIGAN. Flesh pink, dark center, 35c.

GEN. VAN HEUTZ. Salmon red, white eye, 35c.

MISS MILLY VAN HOBOKEN. Coral pink, 35c each.

MISS LINGARD. Best white. Early.

MRS. JENKINS. Dwarf white.

RYNSTROM. Rose pink.

R. P. STRUTHERS. Rosy carmine.

THOR. Soft, ruddy salmon, mottled center.

WIDAR. Reddish violet, white center.

PHLOX SUBLATA or MOUNTAIN PINK, all colors.

All the above, 25c each, \$2.50 per doz., unless otherwise stated.

IRIS

Iris can be set in the Spring although the best time is in September and October. We have 50 kinds of Iris in our collection for you to choose your colors from and have the following in fair quantity.

12 at the price of 10.

Per Clump of
1 to 3
Rhizomes

AMBASSADEUR. Lavender and red violet. Tall	\$.50
ATRO PURPURA. Darkest purple. Early20
AZURE. Rich purple40
CAPRICE. Chinese violet25
CORA. Violet to purple. Early50
EDOUARD MICHEL. Reddish violet. Very effective...	.20
EMPIRE. Bright yellow40
GLODY OF READING. Blue and purple25
IRIS KING. Lemon yellow and maroon25
JEANE d'ARC. White edged with blue. Tall20
KOCHIA. Red and purple25
LOHENGRIN. Very large deep violet mauve20
MOTHER OF PEARL. Pale bluish lavender. Large	.50
PALLIDA DELMATICA. Lavender and blue25
POCAHONTAS. White and pale violet25
PRINCESS BEATRICE. Lavender. Beautiful50
PROSPER LANGIER. Bronze and purple. One of the best	.20
QUEEN MARY. Best white50
SHERWIN WRIGHT. Best yellow. 2 ft.20
SOUV. DE MME. GAUDICHAN. The finest tall dark purple. We call it the best	1.00
WHIFFINPOOF. Tan and deep lavender25
WINDHAM. Lavender pink25
DWARF IRIS. Mixed colors. Early. White and purple	.25
JAPANESE. Blooms after all other Iris are through. Purple, tall20

PEONIES

ALBERT CROUSSE. Large, rosy white.
 EDULIS SUPERBA. Clear pink. Early.
 LA TULIPPE. Creamy white, branching.
 MME. EMILE GALLE. Shell pink touched with lavender.
 FESTIVA MAXIMA. Best white. Large. Early.
 DORCHESTER. Large light pink. Fragrant.

PEONIES—*Continued*

MODELL DE PERFECTION. Late. Soft violet-rose.

OFFICINALIS RUBRA PLENA. Late double red.

RUBRA SUPERBA. Late. Crimson.

OLD-FASHIONED RED. Large clumps.

All the above kinds 3 to 5-eye clumps, at 75c each. Will have other kinds in bloom in season for your inspection, including the new Japanese.

BEDDING PLANTS

We will have a larger supply than ever of Bedding Plants such as below. Have a new Hitchings hot house 34 feet 7 inches long by 21 feet wide, to take care of our growing business.

GERANIUMS

Will have a fine assortment of Potted Geraniums. Large strong plants in blossom. Potted in 3 and 4-inch pots.

These six best kinds at 35c each; \$3.50 per doz.

Smaller plants, 25c each; \$2.50 per doz.

S. A. NUTT. Rich dark crimson.

BEAUTE POITEVINE. Finest salmon pink.

BUCHNER. Pure white.

ALPHONSE RICCARD. Bright vermilion scarlet.

RADIO RED. A very bright red. Very free.

RED BARNEY. A fine new red.

Will have other kinds in the season. Also all kinds of Bedding Plants, such as Coleus, Cannas, etc.

CUT FLOWERS

We strive to have a good assortment of Cut Flowers always on hand. Carnations, Calendulas, Sweet Peas, Gladiolas, etc. in season.

FLOWERING PLANTS—ANNUAL

Grown from Burpee's and Dreer's Seed. The Best Seed obtainable. See Flower Seeds for further descriptions.

	Doz.	3 Doz.	100
ASTER. Dreers Red Sensation. New. Per basket			
\$1.25	\$.60		
ASTER. Queen of the Market. Mixed colors.			
Earliest40	\$1.00	\$2.50
ASTER. Dreer's Superb Late Branching40	1.00	2.50
ASTER. Crego Giants. Curled petals. All colors	.40	1.00	2.50
ASTER. California Giants. Fine40	1.00	2.50
ASTER. Fordhook Favorites. Burpee's mixture of all kinds and colors. Fine40	1.00	2.50

FLOWERING PLANTS—ANNUAL—*Continued*

Doz. 3 Doz. 100

ASTERS in baskets, 20 to 25 plants in pansy baskets, at 85c per basket. All kinds.			
AGERATUM. <i>Fraserii</i> . Blue. For border and bed. Potted, each \$.10; Extra Large, \$.20.			
CALENDULA. Burpee's Mixed and Dreer's Radio	.40	1.00	2.50
COSMOS. Early. Double Flowered or Crested. Crimson, Pink and White. Mixed. One of the prettiest of the Fall Flowers. Per basket, \$1.00....	.50	1.25	3.00
COSMOS. Single. Large Early Flowering. Mixed.	.30	.75	2.00
CENTAURIA or DOUBLE CORNFLOWER. Either blue or mixed colors40	1.00	2.50
CARNATION and DIANTHUS. Best mixtures from Burpee and Dreer50	1.25	3.00
LARKSPUR. Tall Double Stock Flowered. Rose, White, Sky-blue and Dark blue, mixed40	1.00	2.50
MARIGOLD. Tall African. Orange Ball. Large, fine. A free bloomer40	1.00	2.50
MARIGOLD. Dwarf French. Orange Ball. Fine for borders40	1.00	2.50
MARIGOLD. Tall African. Lemon Ball. A lighter shade than the Orange Ball40	1.00	2.50
MARIGOLD. Dwarf French. Gold Stripe. Fine..	.40	1.00	2.50
MARIGOLDS in baskets, 20 to 25 nicely rooted plants in pansy baskets, 85c.			
PANSY. Burpee's and Dreer's best mixture50	1.25	3.00
PANSY PLANTS in baskets. Per basket, 12 plants, 55c.			
PETUNIA. Will have a fine lot of all sorts listed under the Seed Department. Fine for Window Boxes, Hanging Baskets or for bedding. Order whatever kind that you want. Separate and mixed colors. Per basket, \$1.0050	1.30	3.00
PHLOX DRUMMONDII. Best mixed colors. Very free in blooming. Fine for bedding40	1.00	2.50
PHLOX DRUM. Starred and fringed violet and Fordhook crimson50	1.25	3.00
SALPIGLOSSIS or VELVET FLOWER. Mixed colors70	2.00	
SNAPDRAGONS. Dreer's Super Giant Mixture...	.50		
SNAPDRAGONS. Burpee's finest mixtures. Half dwarf and super giants. Per Pansy basket \$1.00...	.50	1.30	3.00
STRAWFLOWERS or EVERLASTINGS. Finest Mixed. Pick before fully opened and keep for Winter. Per Pansy basket \$.8040	1.00	2.50
SALVIA. <i>America</i> . The freest blooming sort. Very fine for bed or border. Per basket \$1.0050	1.30	3.00

FLOWERING PLANTS—ANNUAL—*Continued*

	Doz.	3 Doz.	100
SALVIA. Bonfire. Makes a compact bush 2 ft. high and 2 ft. across. The brilliant scarlet flowers completely cover the plant. Per basket \$1.0050	1.30	3.00
SALVIA PLANTS. All kinds. Potted extra large plants. Each 10c	1.00		
STOCKS. Dreer's Imp. Large Flowering 10 weeks. All colors. Most popular for bedding...	.40	1.00	
ZINNIA. Best Dahlia, Cactus and Giant Flowered sorts. Order whichever you want40	1.00	2.50
ZINNIA. Dreer's New Salmon Rose and California Giants50		

Will have a full supply of all the above and many more Annual Flower Plants.

Flower Plants by Parcel Post: Add 8 cents per doz., 15 cents per 3 doz., to above prices, if you want your plants sent by Parcel Post.

PERENNIAL PLANTS

These plants are grown from seed sown last Summer and Fall in the field and in frames. They are grown from the best seed procurable, Dreer's and Burpee's, and the most popular sorts. They should bloom this year if set in good season. Take care of them and they will bloom for many years. Dig the bed deep, enrich with well rotted manure, keep clean and give protection in the Winter. That is all that is necessary. Nice plants.

	Each	Doz.
ANCHUSA ITALICA DROPMORE. 3 to 5 ft. Blue...	\$.10	\$1.00
AGROSTEMA or MULLEN PINK. Mixed10	1.00
AQUILEGIA or COLUMBINE. Long-spurred Hybrids.	.10	1.00
Extra large transplanted plants25	2.50
AQUILEGIA. Smaller plants10	1.00
ALYSSUM. Basket of Gold. Finest early border.....	.10	1.00
ASTER. Hardy. Michaelmas Daisy10	1.00
CARNATION. Double mixed10	1.00
CAMPANULA or BELLFLOWER. These are really a Biennial but will seed themselves if kept clean. One of the most beautiful of garden flowers. Single.....	.10	1.00
CAMPANULA. Double Bellflower, white, blue, pink...	.10	1.00
CANTERBURY BELLS. True Cup and Saucer. Mixed	.10	1.00
CENTAUREA MONTANA. Hardy Cornflower. Blue	.10	1.00
COREOPSIS. Single and double. Blooms all Summer. Fine for cutting10	1.00
BELLIS or DOUBLE ENGLISH DAISY. A pretty little flower in different shades of rose, red and white.....	.05	.50
DAISY SHASTA. Dreer's Alaska. Fine10	1.00
DAISY. Yellow. Anthemis Kelwayi. Sweet10	1.00
DIANTHUS, or Hardy Pinks. Single mixed.....	.10	1.00
DIANTHUS. Plumarius. Everblooming. Very sweet..	.10	1.00

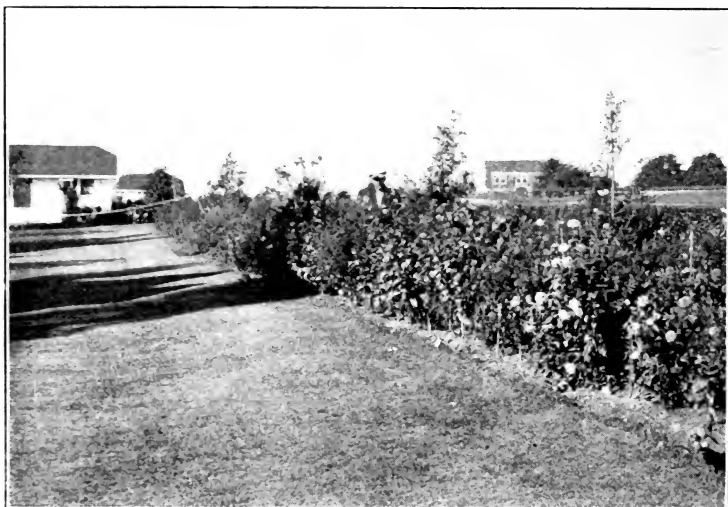
PERENNIAL PLANTS—*Continued*

Each Doz.

DELPHINIUM. Extra choice strains. Very large.....	.25	2.50
DELPHINIUM or HARDY LARKSPUR. Deep blue, light blue or mixed, as you prefer. Nice plants. Gold Medal mixture, Belmosum, Belladonna10	1.00
FOXGLOVE or DIGITALIS. Large spikes of beautiful bell-like flowers. Giant Shirley10	1.00
GAILLARDIA or BLANKET FLOWER. Beautiful large flowers with yellow tips and crimson centers10	1.00
GYPSOPHILA or BABY'S BREATH. Single and double10	1.00
GOLDEN GLOW. Large clumps25	
HELIANTHEMUM. One of the best Rock Garden plants10	1.00
HELIOPSIS SCABIA ZINN. Perennial orange sunflower double. Bloomer all summer10	1.00
HOLLYHOCK or ALTHEA. Single mixed colors. Free blooming10	1.00
HOLLYHOCK. Double mixed. Very beautiful, double10	1.00
HOLLYHOCK. Double. Separate colors. Red, maroon, bright rose, yellow, salmon rose15	1.50
HOLLYHOCK. Allegheny and Newport Pink15	1.50
HIBISCUS or MALLOW. Large blossoms10	1.00
LUPINES. Dreer's Hybrid mixed and dark pink15	1.50
LUPINES. Beautiful spikes of white, rose and blue. One of the best for cut flowers. Field grown. Separate colors10	1.00
LATHERUS or HARDY SWEET PEA10	1.00
LYCHNIS or ROSE CAMPION. Very pretty10	1.00
LYTHRUM or LOOSE STRIFE. Roseum10	1.00
ICELAND POPPY. Prettiest of all for rock garden or border10	1.00
MYOSOTIS. Royal Blue Forget-Me-Nots10	1.00
ORIENTAL POPPY. The most showy of all Perennials. Large deep red flowers. Nice plants10	1.00
PANSY PLANTS. All colors. With protection these have been kept 2 and 3 years. Per 100, \$3.0005	.50
PYRETHRUM or PAINTED DAISY. Single and double mixed10	1.00
RUDBECKIA PURPUREA. One of the best for Summer flowers. Purple daisies10	1.00
SWEET WILLIAMS. Either Single or Double mixed..	.10	1.00
SWEET WILLIAM. Velvety black maroon10	1.00
TRITOMA HYBRIDA. Red-hot Poker Plant. Fine10	1.00
TUNICA SAXIFRAGA. Low everblooming. Rockery plant10	1.00
VALERIANA RUBRA. Mixed. Fine10	1.00

Have other kinds of Perennials growing in my beds. Sweet Rocket, Boltana and other kinds. Come and look them over.

Postage on Perennials, 12c per dozen extra.



Row of Annuals at Cornelius Hearn's Summer Home.

BULBS FOR SPRING, SUMMER AND FALL BLOOMING

- GLADIOLA BULBS.** Choice Mixed. Large sized bulbs. All the most popular kinds in mixture. 3 for 15c, 50c per doz., \$3.75 per 100. Postpaid.
- GLADIOLA BULBS.** Dreer's Gold Medal Mixture. A wonderful diversity of color. By far the finest mixture ever offered at this price. 6c each, 65c per doz., \$5.00 per 100. Postpaid.
- GLADIOLA BULBS.** Burpee's Fordhook Hybrids, Mixed. A wonderful assortment of the leading colors. 3 for 25c, 6 for 40c, 75c per doz., \$5.50 per 100. Postpaid.
- GLADIOLA BULBS** by name. Will have a fine assortment of named kinds. Send us your wants.
- DAHLIA BULBS.** Choice Mixture. All colors. 3 for 50c, Collection of 12 bulbs for \$1.50. Postpaid.
- DAHLIA BULBS.** Named varieties. Send us a list of what you want and we can get them for you.
- CANNA BULBS.** King Humbert. The most popular of all Cannas. Orange Scarlet flowers and large Bronze foliage. 20c each, \$2.20 per doz. Postpaid. Potted Plants, 40c each.
- CANNA BULBS.** Yellow King Humbert. Yellow Blossoms, Green Leaves with once in a while a revert to the Bronze-leaved parent. 4½ ft. 20c each, \$2.20 per doz. Postpaid. Potted Plants, 40c each.
- CANNA BULBS.** The President. The finest red. 25c, \$2.50 per doz.
- CANNA BULBS.** Dreer's Three Select Cannas—Enchantress, old rose, each, 50c; Golden Eagle, clear yellow, each, 50c; Ambassador, cherry red, each, 25c. One each of the three, \$1.00 postpaid.

TUBEROUS ROOTED BEGONIAS

DOUBLE and FRILLED. Pink, Red, White and Yellow.

Any color. State if you want Double or Frilled. 25c each; 6 for \$1.40; 12 for \$2.50. Postpaid.

HYACINTHS, CROCUS, NARCISSUS AND TULIPS

Price ready in Fall. 1st size bulbs. Set them in October and November.

Have a fine lot of Potted Narcissus, various kinds in bud and bloom, 50c per pot.

Have 60,000 Narcissus Bulbs set for Spring blooming. You are cordially invited to come look our fields over in the Spring. Flowers for sale by the bunch or the hundred.

HEDGE AND ORNAMENTAL SHRUBS AND BUSHES

JAPANESE BARBERRY makes a beautiful hedge or single specimen plants.

Strong one-year old plants, each, 10c; per doz., \$1.00; per 100, \$8.00.

Strong two-year old plants, each, 15c; per doz., \$1.50; per 100, \$12.00.

Strong, three-year old plants, each 20c; per doz., \$2.00.

BARBERRY. New Red Leaved Japanese. A real Novelty and a beautiful addition to our list. Rich, lustrous, bronzy-red all Summer changing to vivid orange, scarlet and red shades in the Fall.

Must be set in full exposure to the sun.

Strong two year old plants, each 70c; per doz., \$7.00; per 100, \$60.00.

Strong three year old plants, each 90c; per doz., \$9.00.

PRIVET, AUREAM. Yellow leaved. Very pretty for a hedge or for specimen plants. Nice well branched plant, 12 to 15 inches. Each, 25c; per doz., \$2.75.

PRIVET, CALIFORNIA. The standard for hedges. Can be trimmed any desired shape or height.

One-year old plants, each 8c; per doz., 75c; per 100, \$6.00.

Two-year old plants, each, 10c; per doz., \$1.00; per 100, \$7.50.

Three-year old plants, very bushy, each, 12c; per doz., \$1.25; per 100, \$10.00.

BOXWOOD EDGING. Fine husky plants. 6 to 8 inches. 40c each, \$3.50 per doz.

December 12th, 1927.

The 600 California Privet purchased of you this Fall is very satisfactory. The man who helped me set the hedge, whose specialty for many years has been hedge work, claimed that he never saw as fine plants no matter of what age.

C. E. WRIGHT, East Quogue.

ORNAMENTAL TREES

- JAPANESE MAPLE.** Beautiful red leaves Spring, Summer and Fall. A low spreading tree, very ornamental. One-year old trees, grafted stock, each, \$2.50. Larger trees, each \$5.00 to \$12.50.
- NORWAY MAPLE.** The best shade tree there is. 4 to 5 ft. trees, each, \$1.50; 5 to 6 ft., each, \$2.00; 6 to 8 ft., \$3.00. Larger ones, price on application.
- CATALPA BUNGEII** or **UMBRELLA TREES.** Have a nice lot of these very ornamental trees. Two-year heads. Each, \$2.50.
- WEeping MULBERRY.** The true weeping kind. Very ornamental large two-year heads, \$4.50 to \$6.50.
- SCHWEDLER PURPLE LEAF MAPLE.** Very ornamental, 6 to 8 ft., \$4.00.
- HORSE CHESTNUT,** 3 to 5 ft., each, \$2.50.
- MAGNOLIA TRIPETALA,** large leaves. Called Umbrella Trees. 4 to 5 ft., each \$3.00; 6 to 8 ft., each, \$5.00.
- MAGNOLIA SOULANGEANA.** True pink and white flowered Magnolia. Small trees, from 4 and 5-inch pots, each, \$3.50.
- MOUNTAIN ASH AMERICANA.** Orange scarlet berries, 6 to 8 ft., each, \$3.00.
- MOUNTAIN ASH EUROPEAN.** Scarlet berries. 5 to 6 ft., each, \$2.25.

Can get you any kind or size tree you might want on short notice.

EVERGREENS

- CRYPTOMERIA JAPONICA, LOBBI.** Very graceful and effective. 1-1½ ft., \$3.50; 2-2½ ft., \$5.00.
- JAPANESE YEW, Taxus Cuspidata.** Grows medium in height, spreading and of a beautiful dark green color. Can be planted in partial shade. Fine for Rock Gardens. 1 to 1½ ft. Balled and burlapped, each, \$3.00; 2-2½ ft., \$5.00; smaller trees, 85c.
- JAPANESE YEW.** Dwarf type. *Taxus Cuspidata Nana.* Darker, closer growing than above. 12 to 15 inches, \$3.25.
- PLUMED CYPRESS.** *Retinospora Plumosa.* A beautiful, fine leaved, pointed tree that can be kept trimmed to any shape or size. Bright green, 3 to 3½ ft. B. & B. Each, \$5.00. Smaller trees, 50c to \$2.50 each.
- THREAD CYPRESS.** *Retinospora Filifera.* Fine leaved. Good color. 1½ to 2 ft., each, \$4.00.
- MOSS CYPRESS.** *Retinospora Squarrosa Veitchii.* Very graceful. 2 to 2½ ft., \$4.50.
- ARBORVITAE,** Globe shaped. Dark green. These can be kept trimmed to a perfect ball. Very ornamental. 1½ ft. high by 1½ ft. through. B. & B., each, \$3.00. 2 ft. by 2 ft., each, \$5.00. Small trees, 50c each.
- ARBORVITAE, Rosenthalis.** Dense, compact growth. Fine form and color. Can be trimmed to any width. 2½ to 3 ft. B. & B., each, \$5.00.

EVERGREENS—(Continued)

- ARBORVITAE, Siberian. Very dense dark green, upright shape. 2½ to 3 ft., \$5.00.
- ARBORVITAE, Pyramidal. Tall, narrow, good color. 3 to 3½ ft. B. & B., each, \$5.00. Smaller trees, 50c to \$3.00.
- ARBORVITAE, Douglas Golden. Nice light green foliage tinted with yellow. Very ornamental. 10 to 12 inches. Each, 90c; per doz., \$9.00.
- ARBORVITAE, Standishi. Drooping leaves. Very graceful. Large trees, \$7.50 to \$10.00.
- ARBORVITAE, American. The common White Cedar. Fine for hedge or wind-break. 12 to 18 inches. Each, 70c; per doz., \$7.00; 2½ to 3 ft., each, \$3.50.
- BIOTA ORIENTALIS PYRAMIDALIS. A cheaper form of Arborvitae. Dense and good shape. 1½ to 2 ft., \$1.50; 3 to 4 ft., \$4.00.
- COLORADO BLUE SPRUCE, *Picea Pungens* Glauca. 10 to 15 inches, 75c to \$2.50 each; 15 to 18 inches, each, \$5.50; 2½ to 3 ft., \$12.50.
- KOSTER BLUE SPRUCE. True grafted stock. Price on application.
- BLACK HILL SPRUCE, *Picea Canadensis*. Makes a symmetrical, compact bushy tree of good color. Small trees, 12 to 15 inches high, six years old, three times transplanted. B. & B., each, \$1.25.
- CONCOLOR or WHITE FIR, *Abies Concolor*. One of the best. Nearly blue in color. 10 to 12 inch trees, three times transplanted. B. & B., each, \$1.25. Large trees, 3 to 6 ft., \$7.50 to \$15.00 each.
- DOUGLAS FIR. Hardy bluish green color. From \$1.50 to \$2.50, as to size.
- PINUS, Austrian Pine. Vigorous rugged growth. 3 to 5 ft., \$4.00 to \$8.50.
- PINUS RESINOSA, Red Pine. Rich green color. Vigorous growth. 3 to 5½ ft., \$4.00 to \$10.00 each.
- MUGHO PINE, *Pinus Mugho Compacta*. True dwarf type. Dense, compact growth. Unexcelled for porch or foundation cover. 8 to 12 inches. B. & B., each, \$1.20.
- JAPANESE SPURGE. Best ground cover. Per clump, 30c.
- PICEA ELCESEA, Norway Spruce. Fine for specimen work or hedge. 12 to 15 inches, \$1.00 each; 1½ to 2½ ft., \$1.50 to \$3.50, according to size. These make fine Christmas Trees.
- JUNIPERUS PFITZERIANA, Pfitzer Juniper. Broad bushy habit. Gray green color. 2 to 2½ ft., each, \$5.00; 1½ to 2 ft., \$3.50.

We are adding to our Evergreens all the time and advise anyone in the market for good Evergreens to look our stock over and get our prices. We have many young Evergreens not quoted above at reasonable prices.

FRUIT TREES

APPLE TREES

Nice large trees, 2 and 3 years old.

- BALDWINS. Standard red.
 CORTLAND. The new late McIntosh.
 DELICIOUS. For Winter, sweet, red.
 FALL PIPPIN. Large green.
 KING. Large red.
 McINTOSH. Highest quality red.
 RED ASTRACHAN. Earliest red.
 YELLOW TRANSPARENT. Earliest.
 OSWEGO. New red. \$1.50 each.

Per single tree, 85c; per 5 trees, assorted if you wish, \$4.00, at the Farm.

PEAR TREES

- BARTLETT. Standard.
 BUERRE BOSC. One of the best.
 CLAPP'S FAVORITE. Early, juicy.
 SECKEL. Small, very sweet.

All good sized trees, each, 75c; 5 for \$3.50.

PEACH TREES

We have a nice block of Peach trees, well branched stocky trees in the following varieties:

- BELLE OF GEORGIA.
 CHAMPION.
 CRAWFORD LATE.
 EARLY CRAWFORD.
 ELBERTA.
 J. H. HALE.

These are all yellow Free stone except Belle and Champion. 3-year old trees, large, each, \$1.00; per 5, \$4.75; per 10, \$9.00. Two-year trees in Early Crawford, Champion and Elberta. The three best kinds, each, 70c; per 5 trees assorted, \$3.25; per 10 trees, \$6.00.

PLUM TREES

- ABUNDANCE. Large, fine fruit.
 BURBANK. Medium red.
 GERMAN PRUNE. Large black.
 WICKSON. Late red.

Each, 60c; per 5 trees, \$2.75.

CHERRY TREES

- BING. Large sweet.
 BLACK TARTARIAN. Large.
 EARLY RICHMOND. The best sour cherry.
 NAPOLEON. Large, sweet.
 WINDSOR. Best sweet yellow.
 Large trees, each, \$1.00.
 QUINCE. Orange. XXX grade. Each, 90c.
 CRAB APPLE. Hyslop, dark red, each, 80c.
 WALNUT, ENGLISH. 3 to 4 ft., each, \$1.75.

Can get you any kind of fruit tree that you might want, not listed above. Prices are all net at the Farm. Packing 10c per tree extra.

GRAPE VINES

The best kinds. Good two and three year old vines.

CONCORD. Most popular purple	\$.35
NIAGARA. Best White35
CATAWBA. Late, pink, sweet40
WORDEN. Early, purple35
LINDLEY. The sweetest of all. Red40
DELAWARE. Light Red. Very fine40
BRIGHTON. Reddish Purple. Early45
AGAWAM. Red, large, sweet35

Add 10 cents extra if you want one vine sent by parcel post. 15 cents for three.

CURRANTS

- PERFECTION. A beautiful bright red. Price, 25c each; \$2.50 per doz.

GOOSEBERRIES

- HOUGHTON. Enormously productive. Price, strong plants, 30c each; \$3.00 per doz.

CAN ANYONE EQUAL THIS

July 27th, 1927.

From the 1285 plants of Premier bought of you last year we picked over 3,000 quarts of berries this Spring and they cleared home over \$600.00.

FRED FICKEISSEN.

PLANT DEPARTMENT

STRAWBERRY PLANTS

Sterling Quality



My Strawberry Plants are raised on fresh ground, well fertilized and carefully taken care of. They are well rooted, healthy and true to name. We have tried out many, many kinds and find that only a few kinds seem to do well in this section. Such a kind is the Premier. This kind comes early and stays late, yields heavy and keeps its size well. The Corsican and Rykeman are both very popular for mid-season, being large, sweet and very prolific. We have yet to find an extra good late berry for this section. Gandy is good, but has its faults. Chesapeake is a very shy bearer with us, but extra in quality. All plants are from a new bed. No old plants are ever sold by me.

Price List of Sterling's Strawberry Plants

	25	100	300	1000
PREMIER or HOWARD, NO. 17. The best kind I have ever tried for table use or for market. Begins to ripen early; large, long red berries and keeps right on through the longest season of any berry found yet, and keeps its size and color well, right up to the end of the season. Everybody is praising Premier and there's a reason. If you can only have one kind this is the kind to have	\$.30	\$.80	\$ 2.10	\$ 6.50
See Mr. Fickeissen's testimonial.				
PREMIER. From stock purchased from a far Northern grower last year40	1.00	2.70	8.00
RYKEMAN. Considered by some the same as Corsican, and by others even better than that fine stand-by. This is true stock that I secured from an enthusiastic Rykeman grower	.30	.90	2.40	7.50
CORSICAN. One of the sweetest berries grown. Large plants, leaves and berries, fruit stems long and stiff. Very productive	.30	.90	2.40	7.50
JUDITH. Fine quality, almost equal to Marshall30	.90	2.40	7.50
JUMBO. Claimed to be very large. Worth a trial40	1.00	2.70	8.50

STRAWBERRY PLANTS—*Continued*

	25	100	300	1000
MARSHAL. This is the true Hope Farm Strain. They are considered the best quality berry there is, but not a real heavy yielding berry. Dark red. Keep in hills for best results40	1.00	2.75	9.00
CHESAPEAKE. One of the best for late where it will do well. We never had it do well for us yet. Nice plants40	1.00	2.75	9.00
GANDY. The standard for late. Sour and firm. One of the best for shipping. Does not yield heavy40	1.00	2.75	9.00

Have tried to list the 8 kinds named above about in their order of ripening.

All kinds have perfect blossoms and can be set alone if desired.

Have made the descriptions for these varieties as truthful as it is possible to do with such a variable fruit as the Strawberry. You have to try out the varieties for yourself to find what does well in your soil. The Premier is the only kind that I have found yet that does well for everybody.

EVERBEARING STRAWBERRY PLANTS

MASTODEN. The largest and best Fall bearing berry we have tried yet. Grown from new stock last year. Per doz., 60c; per 3 doz., \$1.50; per 100, \$3.00.

Set the plants this Spring, keep all blossoms pinched off until July and then thin the blossoms out 40% right through the rest of the season. You will then have good-sized berries of fine flavor right up to freezing weather and another crop the following Spring.

All prices quoted above are net at the farm. If you want your Strawberry Plants sent by Parcel Post add 8c per 25, 15c per 100, 20c per 200, 30c per 300; quantities over that should be sent Postage C. O. D.

Strawberry Plants in August, September and October

We will have about all the kinds listed and some new kinds as well for Summer and Fall setting, from our new bed. New plants, well rooted and true to name.

The price for Summer and Fall is higher than Spring prices, but I try to make the price as reasonable as possible and I think you will grant that, when you consider that one, two or sometimes three smaller plants have to be thrown away and wasted in order to get one good, strong, well-rooted plant.

Write for prices.



Hoeing One-Year Mary Washington Asparagus, Fall of 1928.

ASPARAGUS ROOTS

One year old Roots. Grown from High-Priced, Pedigree Seed, the best there is. These roots are large, healthy and ready to grow.

Doz. 100 1000

MARY WASHINGTON. From Re-selected Pedigree Seed. Originator's stock. Prof. Norton claims that this kind is the largest, most productive and finest flavored Asparagus yet developed. Very high branching which makes it the best for cutting green. Rust-resistant \$.20 \$1.25 \$10.00

MARY WASHINGTON. Two-year old roots. These will make large shoots, ready to cut next year. The best for Garden use30 1.75 14.00

All expert gardeners and farmers will tell you that one year old Asparagus Roots are the best kind to set out for field culture. One year old roots recover quickly from the shock of transplanting and

ASPARAGUS ROOTS—Continued

are not badly cut and broken. Set out Sterling Grown Roots this year, about six inches below the surface of the ground, cover with two inches of soil. As the plants grow up fill trench with well rotted manure and more soil, and some good garden fertilizer on top of that. Do not put fertilizer next to any kind of root or plant if you want them to live.

If properly taken care of you can cut your bed the following Spring until June 1st, letting it grow up after that and giving it more manure and fertilizer. The second year from setting cut till July 1st, always feeding it well after letting it grow up.

RASPBERRY PLANTS

CUTHBERT. One of the best for this section. Prolific, large, sweet berries. Makes plenty of plants. Per doz., \$1.00; per 2 doz., \$1.75; per 3 doz., \$2.25; \$5.00 per 100.

ST. REGIS. Everbearing. The best everbearer yet found. Price same as Cuthbert.

CUMBERLAND. The best Black Cap Raspberry. Large, firm, delicious. Nice plants, per doz., \$1.00; per 3 doz., \$2.50.

BLACKBERRY PLANTS

MERSEREAU. The best Blackberry for this section. Large, fine flavor, and quite free from rust and disease. Per doz., \$1.00; per 3 doz., \$2.50.

HORSE RADISH

MALINER KREN. Best kind, per doz., 25c; per 100, \$1.50.

RHUBARB ROOTS

OLD FASHIONED PIE PLANT. Large stalks with reddish tinge. Per root, \$.10; per doz., \$1.00; per 2 doz., \$1.75.

If you want Raspberry and Blackberry Plants, Horse Radish and Rhubarb Roots sent by Parcel Post add 15c to above prices for 1 dozen, 20c for 2 dozen and 25c for 3 dozen.

COLD FRAME PLANTS

Hardy, Well-Rooted Plants re-rooted from Southern Plants.

CABBAGE PLANTS

	Doz.	100	1000
EXTRA EARLY JERSEY WAKEFIELD. Earliest pointed heads	\$.15	\$.70	\$5.00
EARLY CHARLESTON WAKEFIELD. Very large pointed heads15	.70	5.00
EARLY SUMMER. Large flat heads. These three make a fine succession15	.70	5.00

MAGGOT CONTROL

You can raise fine Cabbage without damage from Maggots if you will follow the directions given below:

To 5 gallons of water add ½ oz. Formaldehyde. After mixing thoroughly, pour about a tablespoonful around each plant once a week. Begin to do this by the last of May or as soon as you see the Maggot Fly.

OR

Add 1 oz. Corrosive Sublimate to 8 gallons water. Put ½ cupful to each plant once a week at the same time as above.

CORROSIVE SUBLIMATE

1 oz. pkg.	\$.50
¼ lb. pkg.	1.50

LETTUCE PLANTS

	Doz.	25	100
MIGNONETTE. From Burpee's Seed. Quick heading, good quality	\$.15	\$.25	\$.75
NEW YORK or WONDERFUL. Large heads of finest quality15	.25	.75
BIG BOSTON. Sure heading. Fine15	.25	.75
HANSON. Large solid heads15	.25	.75

HOT BED PLANTS

Ready in May and June.

TOMATO PLANTS

Transplanted, well hardened, stocky plants. Grown from Livingston's and Burpee's Selected Seed. Baskets with 2 doz. nice plants, 60c to 85c per basket.

	Doz.	2	Doz.	100
ALPHA. Drear's new extra early. Potato leaved..	\$.40	\$.75	\$ 2.50	
SUNNYBROOK EARLIANNA. Burpee's best strain	.30	.50	1.50	
CHALK'S EARLY JEWEL. Large, smooth30	.50	1.50	
JOHN BAER. The most popular early sort. Large	.30	.50	1.50	
BONNY BEST. Very productive, early30	.50	1.50	
PONDEROSA. Very large. Fine flavored, meaty..	.35	.60	1.70	
LIVINGSTON'S STONE. One of the best for table, canning or market. Very solid, smooth and fine	.30	.50	1.50	
LIVINGSTON'S GLOBE. Prolific and blight-resistant. Firm. A good shipper30	.50	1.50	
RED HEAD. Bright scarlet fruit. Early; firm.....	.30	.50	1.50	
OXHEART, from Livingston. Large; firm, pointed..	.40	.75		

TOMATO PLANTS—*Continued*

	Doz.	2 Doz.	100
CLARK SPECIAL. Type B. The kind that has given such fine satisfaction. An improved Stone..	.30	.50	1.50
TRUCKERS FAVORITE. The best purple fleshed	.30	.50	1.50
BURPEE'S MATCHLESS. Large, smooth. Bright red. Fine shipper30	.50	1.50
NEW SELF PRUNING TOMATO. Burpee's40		
BURPEE'S DWARF GIANT. Stocky, tree-shaped	.30	.60	1.75
GOLDEN PONDEROSA. Large yellow. Dreer's..	.40	.75	
YELLOW PEAR SHAPED. Small fruit fine for preserves. Very prolific30	.60	
MARGLOBE. New disease resistant. Fine30	.60	1.75
NORTON. Another improved type. Disease resistant	.40	.75	

Potted Plants in the early sorts. Large, stocky plants. Chalk's Early Jewel, John Baer and Red Head. 6c each; 65c per doz. Alpha and Earliana, 10c each.

Tomato Plants in Pansy Baskets. We will have about all of the above kinds in baskets, 25 plants to the basket, for 60c to 85c per basket at the farm. Wet the basket down thoroughly and you can cut each plant out just like potted plants.

Any of the Main-Crop, Early and Mid-season kinds at \$10.00 per 1,000. Order early. All transplanted once.

Special price for late sown plants, not transplanted, for the late settings, \$4.00 per 1000.

Add 9 cents per dozen, 12 cents per 2 dozen and 25 cents per 100 to your order if you want them by Parcel Post.

PEPPER PLANTS

Well Hardened. Strong Plants.

	Doz.	100
HARRIS' EARLY GIANT. Very large, productive, sweet and early. Earlier and larger than Ruby King.....	\$.25	\$1.75
NEAPOLITAN. Early, large and sweet. Prolific.....	.25	1.75
BURPEE'S RUBY KING. One of the sweetest. Large	.25	1.75
SWEETMEAT GLORY. Pointed, sweet. Thick fleshed	.25	1.75
CHINESE GIANT. Largest of all, most popular.....	.25	1.75
BURPEE'S NEW SUNNYBROOK. The sweetest Pepper of them all. Small but very thick fleshed. Very popular	.25	1.75
LARGE BELL or BULL NOSE. Rather warm.....	.25	1.75
OSHKOSH. Best yellow. Large, sweet25	1.75
LONG RED CAYENNE. Hot. Very prolific25	1.75
CORAL GEM BOUQUET. Small, hot. Very ornamental	.25	

Add 8 cents per dozen, 15 cents per 100 to the above prices if you want them sent by Parcel Post.

EGG PLANTS

Transplanted, Well Rooted and Hardened
Two dozen nice plants in basket, \$1.00.

	Doz.	Doz. ³
IMPROVED NEW YORK SPINELESS. Large purple..	\$.50	\$1.40
BURPEE'S BLACK BEAUTY. Large, early, prolific...	.50	1.40

Add 9 cents per dozen, 15 cents per 3 dozen, if you want these plants sent by Parcel Post.

POTTED EGG PLANTS at 12c each, \$1.20 per doz. Large plants.

SWEET POTATO PLANTS

Ready in May and June.

	Doz.	100	300	1000
YELLOW JERSEY. Productive	\$.15	\$.80	\$2.00	\$6.00
RED JERSEY. Extra quality15	.80	2.00	6.00
PORTO RICO YAM. Large, fine for baking..	.15	.80	2.00	6.00

Add 8 cents per doz., 15 cents per 100, 20 cents per 300, 40 cents per 1,000 if you want these sent by Parcel Post.

FIELD GROWN PLANTS

Ready from June 20th to August 20th approximately.

All my plants are raised on fresh ground and the very best strains of seed are always used.

BRUSSELS SPROUT PLANTS

The seed is treated with hot water for Black Stem and Blackleg and you are thus assured of strong, healthy plants free from disease. Plants are raised on fresh ground.

	Doz.	100	1000
STERLING STRAIN. From seed raised especially for my own critical trade. * See testimonials.....	\$.15	\$.70	\$5.00
LESLIE STRAIN. Stands severe cold well15	.70	5.00

Price by the thousand is liable to change, depending on the season.

January, 1929.

I used your Sterling Erfurt Cauliflower Seed last year and from the acre of ground that I had, shipped over 300 crates of No. 1 flowers.

ROLAND C. HORTON.

CAULIFLOWER PLANTS

My seed is treated with the hot-water treatment, insuring against Black Stem, Blackleg and some say, against Blight. Plants raised on fresh, disease-free ground.

	Doz.	100	1000
STERLING LARGE EARLY ERFURT. Large, snow-white heads. One of the best for main crop	\$.15	\$.60	\$ 4.00
CATSKILL SNOWBALL. One of the best strains of Early Snowball	.15	.60	4.00

Price by the thousand liable to change without notice.

See testimonials as to the Sterling Erfurt.

Use Corrosive Sublimate treatment for Maggots in your seed bed. Pour along the row as soon as you see signs of Maggot.

CABBAGE PLANTS

This seed is treated for Black Stem.

Plants are all grown from choice Long Island grown seed excepting the Danish Ball Head.

	Doz.	100	1000
ALL SEASON. Sure heading. Large, flat heads..	\$.10	\$.50	\$ 3.00
EARLY FLAT DUTCH. Best for late setting	.10	.50	3.00
SAVOY. Long Island Special. Curled or crumpled leaves. Best quality	.10	.60	4.00
LARGE LATE DRUMHEAD. Largest heads...	.10	.50	3.00
LATE FLAT DUTCH. Solid, large heads.....	.10	.50	3.00
DANISH ROUNDHEAD. Short stems, very solid	.10	.50	3.00
ALLEN'S MAMMOTH ROCK RED. Sure heading	.15	.60	4.00

If you want any of the Brussels Sprout, Cauliflower or Cabbage Plants listed above sent by Parcel Post add 8 cents per doz., 15 cents per 100, and 8 cents for each additional 100, to above prices.

CELERY PLANTS

Ready in July and August. Grown on fresh ground from the best seed.

	Doz.	100	1000
FORDHOOK or EMPEROR. Burpee's Seed. Dwarf type, stocky, crisp and of the finest nutty flavor	\$.15	\$.60	\$ 5.00
GOLDEN PLUME. Livingston's Strain. A new variety, one of the finest for second early or for late storing. Grows strong, healthy, large plants of extra quality. Blight proof	.15	.60	5.00

December, 1928.

Had a fine crop of Cauliflower from your Sterling Erfurt. Did not have any culls, about the best run of flowers that I ever raised.

PAT DRUMM.

CELERY PLANTS—*Continued*

	Doz.	100	1000
WHITE PLUME. Self blanching. Extra early.....	.15	.60	5.00
GOLDEN SELF-BLANCHING. Burpee's American Grown Seed. Fine. Dwarf type. Second early...	.15	.60	5.00
HENDERSON'S EASY BLANCHING. Does well where other kinds will not grow. Good quality..	.15	.60	5.00
GIANT PASCAL. Tall Winter. Fine nutty flavor. One of the best for storing15	.60	5.00
WINTER QUEEN. Stocky, very large, crisp.....	.15	.60	5.00

Add 8 cents per doz., 12 cents per 100 and 8 cents for each additional 100 if you want these plants sent by Parcel Post.

INSECTICIDES, SPRAY MATERIAL AND SUPPLIES

ARSENATE OF LEAD

"Corona Dry" Arsenate of Lead packed in 5 lb. bags, 6 to a case. 5 lbs. or more at 15c per lb.

"Corona Dry" Arsenate of Lead, 1 to 4 lbs., at 20c per lb.

Prices liable to change.

"Corona Dry" is the new name for the Vreeland's Lead, the best kind.

CALCIUM ARSENATE

A light, fluffy powder, stronger than the Arsenate of Lead, and keeps in solution better.

Corona Calsenate brand. Arsenic Oxide not less than 40%. 5 lb. pkgs., 6 to a case, at 10c per lb.

1 to 4 lbs., at 15c per lb.

Use Calcium with your Bordeaux Mixture and save money on your Poison.

CORONA DRY POWDERED BORDO MIXTURE

This mixture contains not less than 12½% copper and is very finely ground. Use 5 to 10 lbs. to 50 gals. water, for control of Blight and Fungus. Packed in 5 lb. bags, 6 to a case, 5 lbs. or more at 14c per lb. 1 to 4 lbs. at 20c per lb., 100 lbs., \$13.00.

VREELAND'S "ELECTRO" DRY POWDERED LIME-SULPHUR

Finely powdered. Mix about 15 to 25 lbs. with 45 gals. water and use it as a Dormant Spray. Use 5 to 8 lbs. for a Summer Spray.

Packed in a 100 lb. drum, per 100 lbs. \$13.00. Packed in a 25 lb. drum, 25 lbs. at 17c per lb. 6 to 24 lbs. at 20c per lb. 5 lb. pkgs. at 24c per lb. 1 to 4 lbs. at 25c per lb.

TOBACCO DUST

Fine ground. Used for dusting plants for Aphid, Thrip and Fleas, hens' nests, etc. Per lb., 10c; per 10 lbs., 70c; per 100 lb. bag, \$5.50.

TREE TANGLEFOOT

We believe this to be the best control of the Canker Worm that eats the oak leaves in the summer. Apply in late fall for best results but can be applied in early spring.

	Each
1 lb. can	\$.60
5 lb. can	2.75
10 lb. can	5.25
25 lb. can	11.00

Will apply this for anyone at so much per tree.

BLUE VITRIOL

For making Bordeaux Mixture. Use 5 lbs. Blue Vitriol, 5 lbs. Lime to 50 gals. water. Dissolve the Vitriol in water over night. Price 8c per lb. in small lots; 7c by the bbl. Price liable to change.



Best for Mites, Lice and Germs

Carbola is a white paint and powerful disinfectant combined in powder form. Just mix with water and you have a smooth-flowing disinfecting paint. No waiting or straining. Does not flake or peel off. One pound covers 100 square feet.

Apply Carbola to the interiors of your poultry houses, dairy barns, hog pens and outbuildings. Apply it to every surface that might harbor lice, mites and disease germs. It is live stock insurance against tuberculosis, foot and mouth, hog flue and other destructive diseases. Try it. Satisfaction guaranteed.

5 lbs. \$.75	25 lbs. \$ 2.75
10 lbs. 1.25	50 lbs. 5.00

SPRAYING LIME

Powhattan Brand. Find this brand is superior to others. Packed in 50 lb. bags, 85c per bag; \$7.50 per 10 bags; \$22.00 per 40 bags or ton.

SPRAY PUMPS

Have a stock of these handy Sprayers listed below on hand and can get you any kind or size you might want on very short notice. Send for catalog.

CARBOLA SPRAYERS

Galvanized Sprayers. Nicely made. Long hose, good nozzle. Holds 3 gals. Each \$6.50.

BRASS SPRAYER

One of the best on the market. Easily filled. Full brass. Long hose, extension rod, good nozzle. Holds 3 gals. Each, \$9.50.

CARBOLA DUSTERS

The handiest duster for Garden or Flower-bed. Each \$1.25.

SULFOCID

A Better Summer Spray

Sulfocide is a powerful summer fungicide—at low cost—for fruits, vegetables and flowers. When sprayed, it quickly decomposes leaving a film of sulfur so fine as to be almost invisible except where drops accumulate.

1 5-gal. can in case	8.75
1 gal. can in case	2.75
1 qt. can	1.00
1 pint can70

Freight paid to any R. R. station on Long Island on orders of 5 gallons or over.

1 qt. makes 50 gals. of spray
1 gal. makes 200 gals. of spray
Add ½ lb. Kayso to each 50 gals. of spray, putting it in the tank first.



SCALECID

THE COMPLETE DORMANT SPRAY

"Makes a Tree Outgrow Its Troubles"

Fall spraying with Scalecide controls psylla and peach leaf curl. Spring application controls aphids, pear thrips, leaf miner, case bearer and leaf roller. Either fall or spring spraying with Scalecide controls scale, bud moth, European red mite, fungus or blight cankers from which are spread fire blight, collar rot and root rot. And in addition, year after year use of Scalecide invigorates the trees.

Ask for Booklet

50-gal. bbl. (freight paid to any R. R. station on Long Island)\$38.00

15-gal. drums, freight paid to any R. R. station on Long Island\$11.50

Drums \$2.00 extra but returnable at same price.

F. O. B., Hackensack, N. J.

1 10-gal. can in case, freight paid to any R. R. station on Long Island.....\$10.60

1 5-gal. can in case, freight paid to any R. R. station on Long Island..... 6.25

1 gal. can, at the Farm 1.75

1 qt. can, at the Farm75

Per Gal. at the Farm; bring your own containers 1.00



NICOTINE DUST

The dry powdered Nicotine Sulphate. Dust it on the heat of the day and it forms a gas and will kill all insects, if thoroughly applied. Per lb. 25c; 10 lbs. at 22c per lb., 100 lb. drums at 19c per lb. Price liable to change.

KAYSO

Use KAYSO in All Your Sprays for All Spraying

KAYSO makes the spray spread in an even, unbroken coat over every surface, thereby giving better control of pests and diseases.

Packed in the following sizes—I keep in stock up to 10 lb. pkgs.

100 lb. Sacks	per lb.	\$.20
50 lb. Sacks	per lb.	.21
10 lb. Sacks (12 to case or separately)	per lb.	.25
2 lb. Packages (36 to case or separately)	per pkg.	.60
8 oz. Package (tin container; 24 to case or separately) ..	per pkg.	.30

NICOTINE SULPHATE

Same as Black Leaf 40. 40% Nicotine.

The Liquid Spray that controls Plant Lice or Aphis. Put $\frac{1}{2}$ lb. to 50 gals. water, add 6 or 8 ozs. of Kayso and you have one of the best controls there is for sucking insects.

Per 1 oz. Bottle, for garden use	\$.35
Per $\frac{1}{2}$ lb. Tin, makes 50 gals.	1.25
Per 2 lb. Tin	3.25
Per 10 lb. Tin	11.85

Special price on larger quantities.

FINE GROUND SULPHUR

For dusting Potatoes, spraying and spreading on the land for Potato Scab.

Sublime Sulphur. The finest and purest. 100% pure. 1 to 4 lbs. at 10c per lb.; 5 to 99 lbs. at 7c per lb.; 100 lb. bags at $5\frac{1}{2}$ c per lb.

Commercial Sulphur. 99 $\frac{1}{2}$ % pure. Use one lb. of this or $\frac{1}{2}$ lb. of the Sublime to 1 bu. of seed as you cut your potatoes and you will gradually work out of the Scab. 1 to 4 lbs. at 7c per lb.; 5 to 99 lbs. at 4c per lb.; 100 lb. bag at 3c per lb.

HYLITE

A new cold water paint for inside work. Does not rub off. Comes white and can be colored any desired color. 6 lbs. makes 1 gal. of paint. Per lb., 20c; 6 lbs. for 90c; 50 lbs. at $12\frac{1}{2}$ c per lb.

FUNGTROGEN. Best spray for Black Spot and Mildew on Roses. Pt., \$1.25; Qt., \$2.00.

SEMESAN. For disinfecting seeds, bulbs, soil, etc. Kill disease spores. 2 Oz., 60c; 8 Oz., \$1.60.

VOLCK. The best oil spray for scale, etc. Half Pt., 50c; Pt., 75c.

MULFORD CULTURES

For inoculating Legumes for increase in crop.

There is a different Culture for each of the different kinds of Legumes, so be sure to state what crop you wish to inoculate.

Cultures for Garden, Field and Cow Peas, Garden Beans, Lima Beans, Clovers, Alfalfa, Soy Beans, Vetches and Sweet Peas always on hand. Other kinds can be gotten on very short notice.

Clover and Alfalfa Seed	Peas, Beans, Etc.
1 bu. size \$1.00	5 bu. size \$2.25
½ " " .60	2 " " 1.00
	1 " " .60
Garden size for all kinds	.35

FERTILIZER DEPARTMENT

"SUNRISE BRAND"

We are the Authorized Agents for the Long Island Produce and Fertilizer Co. of Riverhead and Southold, L. I., for this section.

They manufacture the "Sunrise Brand" of Fertilizer which has given such good satisfaction in Suffolk County.

The different analyses that they manufacture are as follows:

5% Ammonia, 8% Phos. Acid, 5% Potash.
5% Ammonia, 8% Phos. Acid, 4% Potash.
5% Ammonia, 8% Phos. Acid, 6% Potash.
6% Ammonia, 9% Phos. Acid, 5% Potash.
10% Ammonia, 16% Phos. Acid, 8% Potash.

The prices vary as to analysis and the time that you pay for the fertilizer. The 5-8-6 is a Special Cauliflower Mixture which has been tried in this section and found very satisfactory. Would be pleased to receive your orders.

REAL ESTATE

CARRINGTON PARK

Four lots on Nassau Point. These are very large, high lots covered with large oak trees, carefully trimmed out to make a fine Park-like effect. Each lot has over 100 feet frontage on Little Peconic Bay Road, a 3-rod road recently accepted and rebuilt by the town. They are only a few steps from the Cove, the deepest water near the Point, and the best anchorage in Peconic Bay.

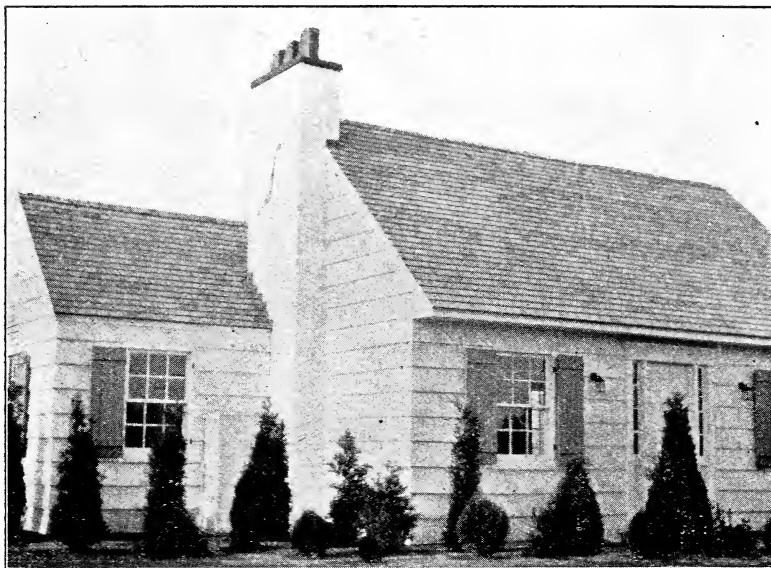
These lots are Nos. 421, 422, 423, 424, situated just south of where Vanston Road turns west and Little Peconic Road begins.

This Block would make a fine Estate if one wanted a big place, or I will sell the lots separately.

Price of single lots \$25.00 per front foot.

Price for the Block of four lots, \$22.00 per front foot.

Terms reasonable.



Executive Building, Midhampton Development

TURTLE POND

Two lots, Nos. 225 and 226, extending from Wunneweta Road on the east to Wunneweta Pond on the west.

Each one has a frontage of about 100 ft. on the water. There is good high frontage on the water, with a very pretty view and suitable for two Bungalows. Large oak trees cover the whole tract.

A 15-foot Right of Way bounds lot No. 226 on the north and there is a small fresh water pond on this lot which I am planting to all kinds of water plants. These lots are very suitable for a Rock and Water Garden and could be made one of the beauty spots of the Point.

Price of these lots, \$25.00 per front foot, on the water.

Nassau Point Club Properties have been wise enough to reserve a 15-foot strip all around Nassau Point above high-water mark. This makes the whole water-front available to any one living anywhere on the Point. The Club also has large Bathing Houses on the East Bay and on the West Bay and a 320-ft. dock on the East Bay.

TUTHILL WOODS

A tract of 16 acres of woodland with a frontage of 323 feet on the north side of the Middle Road, about 90 rods east of Depot Lane.

This tract is owned by Mr. Frank McBride and myself and we expect to run a three-rod road through the center. This will give us four nice lots on the Middle Road and about 50 lots with 75 feet frontage on this three-rod road which we will call Tuthill Avenue. We will sell these lots singly or by the acre, as you wish, and the price will be very reasonable. About 3 acres of heavy wood on the north end of this piece that we will sell very reasonable. Could cut many pound poles or dock spiles from this wood.

CREEK VIEW

A waterfront tract of over $1\frac{1}{2}$ acres on Eugene's Creek, one of the best creeks for crabbing, clamming and eeling in Southold Town, and very accessible to Peconic Bay. An ideal spot for a Bungalow.

Expect to run a 33-foot road through the center of this tract direct to the creek, and will sell lots on the creek and on this road. The road will give access to the creek to everyone purchasing lots of me.

Price will run from \$5.00 per front foot to \$20.00 on the water.

May have a bungalow ready to rent for the summer at Creek View.

MAIN ROAD LOTS

Pequash Corner: A large corner plot situated at the corner of Pequash Avenue and the Main Road.

This lot has a frontage on the Main Road of 208 feet and 200 feet on Pequash Avenue. It is situated very near the center of the village and in the fastest growing section of Cutchogue. A fine corner for a new business section, as Pequash Avenue leads to one of the most popular Summer Cottage settlements in Southold Town, Fleet's Neck. At this writing there is a large fishing clubhouse being erected on the West Creek.

Parsonage Lot. This is where the M. E. Parsonage stood for 20 years. The new Parsonage is directly in front of the M. E. Church. This lot has a good high frontage on the Main Road of about 93 feet. It is 365 feet deep and runs to a point at the back. The cellar is excavated and there is a grease trap and cesspool all ready to be hooked up to. Price very reasonable.

I have a Real Estate Salesman's license this year and have a listing of many Bungalows, Summer Cottages, Building Lots, Waterfront Lots, Farms, etc. If interested write me a letter, telling me of what you want, or call Peconic 55.





A nice Evergreen setting. Home of Edw. Samohel, Riverhead.



Globe Brand Grass and Clover Seed is the very best grade there is to be found and the brand we always buy when it is possible to buy it.

NOTICE: I do not warrant in any way, express or implied, the description, quality, productiveness or any other matter of any seeds, bulbs, plants, shrubs or trees sold by me, and I will not be in any way responsible for the crop.

However, all complaints are carefully looked into and I try to adjust them satisfactorily to all.

RALPH W. STERLING.



Our Field of Premier Strawberry Plants.

Address all Communications and make
all Checks and Money Orders payable to

RALPH W. STERLING

CUTCHOGUE, L. I., (*Suffolk County*) N. Y.

Telephone Peconic 55